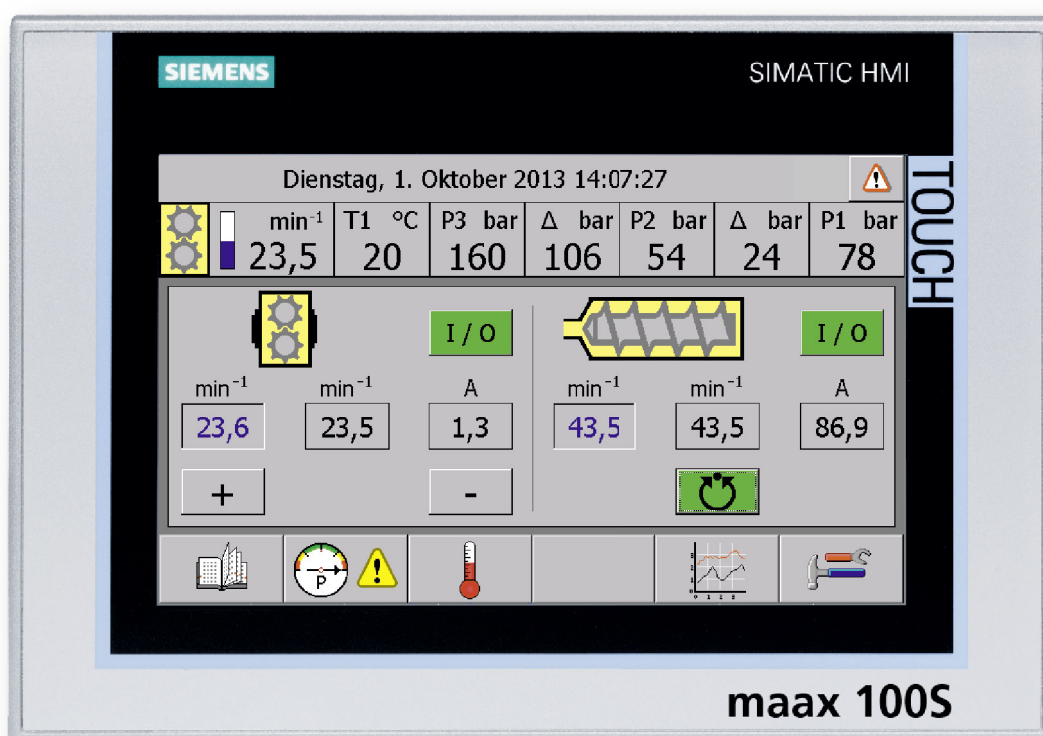




maax[®] 100S

Automation solution for retro-fitting extrusion lines



Integrating new components into an existing extrusion or compounding line calls for modifications to the control technology. The coordination of these components poses a huge challenge. The maax[®] 100S automation system is the ideal solution for integrating melt pumps and screen changers.

It simplifies operation, control and adjustment of the operating parameters. This guarantees optimum protection and operation of the gear pump and screen changer. Process and operational reliability of the entire system is increased.

Your benefits

- Simple and clear operation of the line-start and stop procedures
- Increased productivity, by saving procedures in parameter lists
- Rapid and precise control of pelletizer and pump speed, depending on application
- Integrated temperature control of system components
- Quick error detection by plain text messages
- Scalable visualisation of various operating parameters in a trend display

maax[®] 100S

Automation solution for retro-fitting extrusion lines

Features

- Convenient and safe operation via color display with touch function and keys
- Up to 16 temperature zones
- Online language changeover

Method of operation

- Automatic run-up to initial start speed
- Pressure controlled operation from start
- Integrated filter monitoring
- Quick and precise control of pump admission pressure

Technical specifications:

| | |
|---|--------------------------------------|
| Analogue inputs 0-10V: | 8 |
| Analogue outputs 0-10 V for drive actuation: | 3 |
| Melt pressure measurements: | 3 |
| Melt temperature measurement: | 1 |
| Types of temperature sensor: | Thermoelement Typ J |
| Configurable control circuits: | 1 (Pump inlet pressure) |
| Interfaces: | MPI Profibus, USB, Profinet/Ethernet |
| Monitor: | Siemens Comfort Touch Panel TP700 |
| Auxiliary power: | 24 VDC, -15% to +20%, approx. 3 A |
| Operating/storage temperature: | 0 to +50°C / -20 to +60°C |
| Formula storage: | Internal Flash memory, memory card |

maax[®] 100S as a component of expac[®]

As a system supplier, maag pump system offers complete assemblies for your extrusion plant comprising extrex[®] gear pump, screen changer, maax[®] 100S and drive unit. As a sum total of the individual parts, the expac[®] system enhances the productivity of your process. The experience garnered by maag pump systems allows all components to be wisely networked, hence achieving an optimized solution and significantly increasing operational reliability.

maax[®] 100S offers upon request

- All electrical equipment incl. the automation system supplied
- Supply and construction of all required mechanical assemblies and parts including connectors, flanges, bases, etc.
- Supply and integration of melt filtration systems
- Installation of electrical and mechanical assemblies
- Process technology optimization and guidance
- Commissioning incl. operator training
- "Round-the-clock" service with short response times