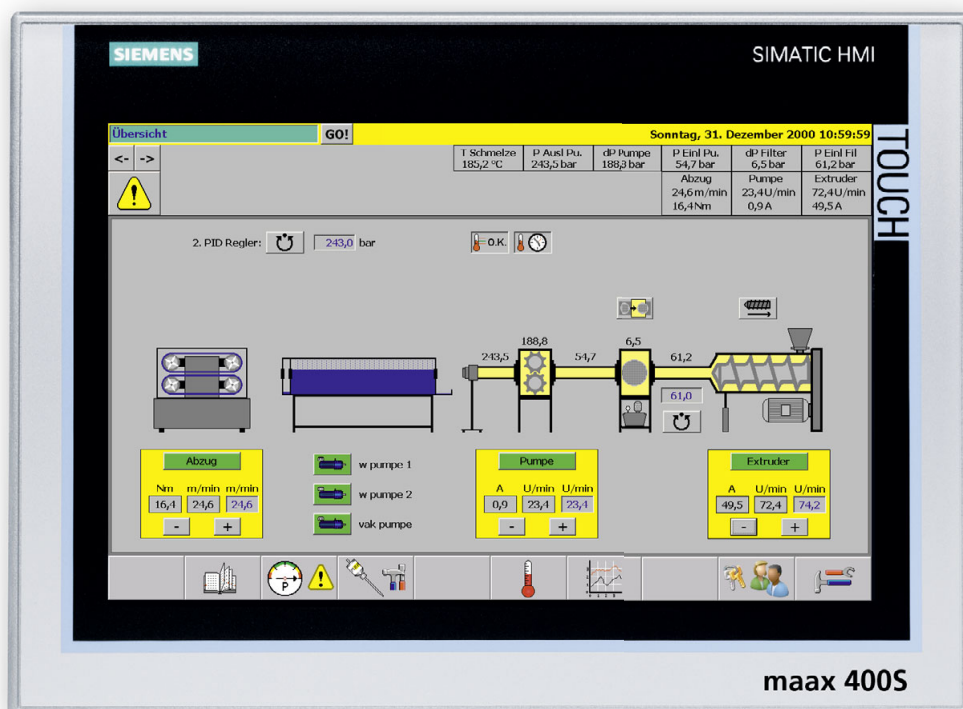


maax[®] 400S

Automation solution for Coextrusion lines



Coextrusion lines with multiple heating zones, filter monitoring or additional drives cannot be controlled using a small control- and operating unit. The operator will lose his overview and in moments when rapid action is required, it will be difficult to take control of the processes.

Maag has developed a control unit which is very user-friendly and clearly arranged. The operating data is displayed logically and operation is simple and intuitive.

Your benefits

- Simple and clear operation of the line start and stop procedures
- Increased productivity by saving procedures in parameter lists
- Configurable system and software configuration
- Rapid and precise control of pelletizer and pump speed, depending on application
- Integrated temperature control of system components
- Quick error detection by plain text messages
- Scalable visualization of various operation parameters in a trend display

maax[®] 400S

Automation solution for Coextrusion lines

Features

- Convenient and safe operation via colour display with touch function and keys
- Up to 48 temperature zones
- Online language changeover

Method of operation

- Quick error detection via plain text messages
- Automatic run-up to initial start speed
- Pressure controlled operation from start
- Integrated filter monitoring
- Integrated temperature control of plant components
- Quick and precise control of pump admission pressure

maax[®] 400S as a component of expac[®]

As a system supplier, maag pump system offers complete assemblies for your extrusion plant comprising extrex[®] gear pump, screen changer, maax[®] 400S, and drive unit. As a sum total of the individual parts, the expac[®] system enhances the productivity of your process. The experience gained by maag pump systems allows all components to be wisely networked, hence achieving an optimised solution and significantly increasing operational reliability. Integrated statistical functions and process data storage enable a transparent quality management system. Plant flexibility is also enhanced by the effect of additional tolerances, e.g. on pump admission pressure over the setpoint value (pump admission pressure control).

Technical specifications:

Analogue inputs 0-10 V:	8
Analogue outputs 0-10 V for drive actuation:	4
Melt pressure measurements:	6
Melt temperature measurement:	2, at heating zone or analogue input
Types of temperature sensor:	Thermoelement type J, K, R, S, T, PT 100, 0/4-20 mA
Configurable control circuits:	2 (1x pump inlet pressure, 1x freely config)
Interfaces:	2x Ethernet, 4x USB, RS232, Profibus DP, Profinet, DVI
Monitor:	SiemensComfort Touch Panel TP1200
Auxiliary power:	24 VDC, 20.4V-28.8V, approx. 2.5 A
Operating/storage temperature:	0 to +50°C / -20 to +60°C
Formula storage:	Internal Flash memory, USB, network
Logs:	Alarm, pressure, process data log

Upon request, maax[®] 400S offers you a full service

- All electrical equipment incl. the automation system supplied
- Supply and construction of all required mechanical assemblies and parts including connectors, flanges, bases, etc.
- Supply and integration of melt filtration systems
- Installation of electrical and mechanical assemblies
- Process technology optimization and guidance
- Commissioning incl. operator training
- "Round-the-clock" service with short response times