

Portable Flow & Pressure Test Instrument with Data Logger

The Flowmaster 250DL MKII provides the most reliable and accurate flow and pressure measurements every water drawing off point, producing verifiable reports. Invaluable for hydrant testing, pump testing, flushing and water main condition testing.

Measures flow rates up to 800 USGPM / 3,000lpm and pressures up to 350 PSI / 25 bar. The electro-magnetic sensor has no moving parts - measurement is not affected by debris in the water stream.

Applications

- Hydrant Testing
- Flushing
- Trunk Main Conditioning
- Minimum Night Flow Measurement

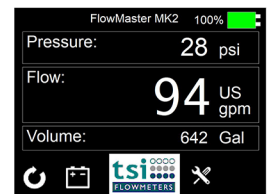
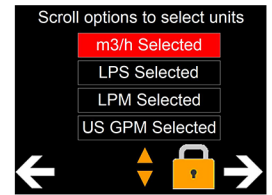
Features

- Ease of Use
- Electromagnetic Sensor - No Moving Parts
- High Accuracy - Digital Pressure +/- 1% of Range
- Flowrate Accuracy: 98%
- Integrated Data Logger
- Battery Monitor Display
- Internal Rechargeable NiMH Battery - Up to 8 Hours Operating Battery Life
- Robust Construction

4 Display Modes

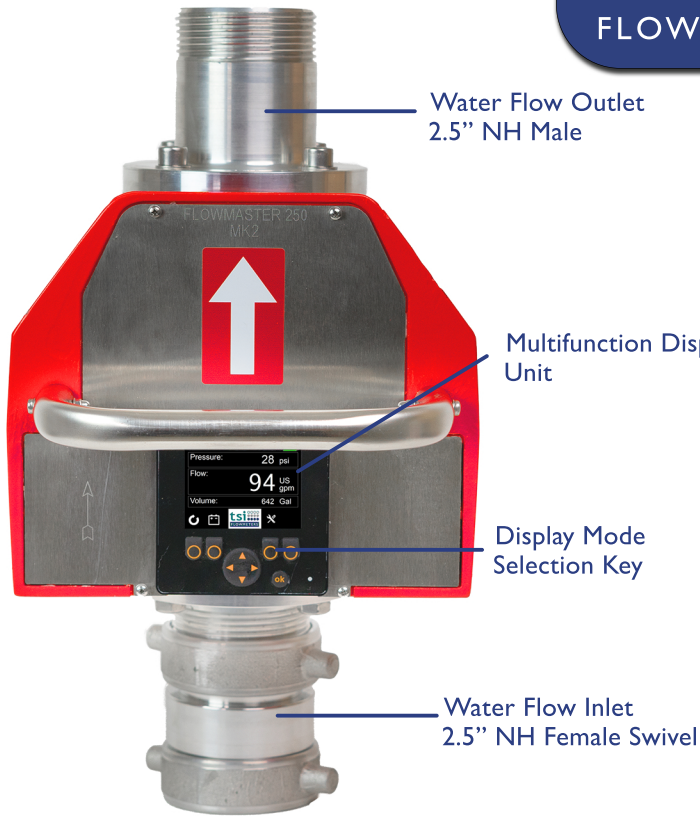
- US GPM
- Litres per second (lps)
- Litres per minute (lpm)
- Cubic metres per hour (m³/h)

Screen Displays



Integrated Data Logger & Report Generation Software





Lightweight & Portable



Backlit Information Display



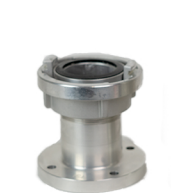
Robust Engineering



Simple Readout Display

Other Adaptors Available

Including:



● Storz 65/B/C



● BS Fitting



● NH Valve

Transport Case Available

with interior compartments for Flowmaster & accessory kit, castor wheels & handle.



Technical Data Flowmaster 250DL MKII

(EN ISO 12100-1, EN ISO 12100-2, EN 60204)

Internal Data Logger: Record Up to 12 Hours of Flow and Pressure Reading
 Battery power supply: rechargeable battery, 8 hours operation.
 12V DC, 2.2 Ah, separate charger included with delivery.
 Optional External Battery Bank to Extend Operating Times
 Working temperature: -10 to +50°C.
 Connections: 2.5" NH Female Swivel on Inlet, Male on Outlet
 Dimensions: 210 mm height, 240 mm width, 390 mm depth.
 Weight: 12.5 kg Housing: Aluminium.

Flow Meter:
 Type: Electromagnetic.
 Operating range: 9-800 US GPM / 30-3000 LPM
 Accuracy: 30 to 750 L/min \pm 15 L/min, >750 L/min \pm 2%.
 Standard functions: Display of current flow rate, display of volume.
 Display Type: 320x240 Backlit Graphic Color Display
 Pressure Transducer: Operating Range: 0-350PSI / 0 - 25 bar (\pm 1%)