

All-in-one Measurement Device with Data Logger and Mobile

The FlowPod Mini provides the most reliable and accurate flow and pressure measurements. Ideal for producing verifiable and traceable data for your reports.

Measures flow rate from 1 to 100 lpm along with pressure measurements up to 16 bar. No moving parts - which in turn means that measurements are not affected by debris in the water stream

Applications

- Verifying Domestic Water Supply Flow and Pressure
- Testing Fire Hose Reels

Features

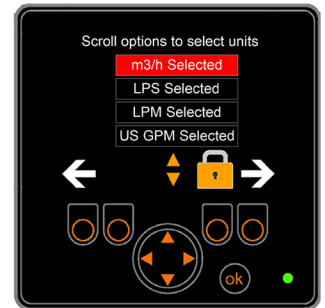
- Ease of Use
- Electromagnetic Sensor - No Moving Parts
- High Accuracy - Digital Pressure +/- 1% of Range
- Flowrate Accuracy: 99%
- Integrated Data Logger
- Battery Monitor Displays Remaining Operating Time
- Internal Rechargeable Li-Ion Battery - Up to 8 Hours Working Time
- Robust Construction



Screen Displays



All Information On One Display

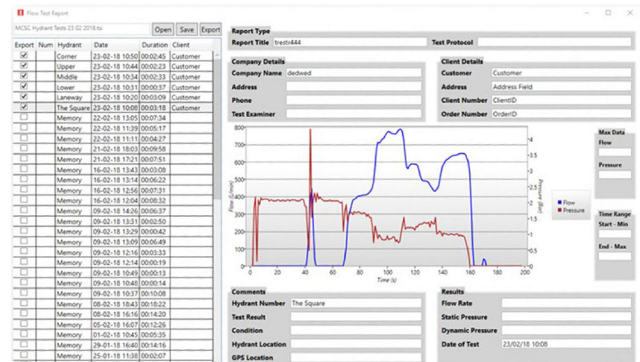


Flow Units Selection Choice (accessible through button three)



TSI Mobile App
Link your Flowpod Mini to the app via bluetooth for Data Collection and Cloud Storage

Integrated Data Logger & Report Generation Software





Lightweight & Portable



Internal Data Logger



Robust Engineering



Available Travel Case with interior compartments for Flowpod Mini & Accessories

Flowpod Mini & Helpful TSI Video Content



TSI YouTube Channel



Understanding readouts when there are readings



Flowpod Mini playlist

Technical Data Flowpod Mini

(EN ISO 12100-1, EN ISO 12100-2, EN 60204)

Internal Data Logger: Record Up to 12 Hours of Flow and Pressure Readings

Battery power supply: rechargeable Li-Ion battery, 8 hours operation time

12V DC, 2.6 Ah, separate Li-Ion charger included in delivery.

Optional External Battery Pack available - extends operation time

Working temperature: -10 to +50°C

Connections: 1" BSP Male Inlet, 1" BSP Male/Valve Outlet

Dimensions: 210 mm height, 240 mm width, 390 mm depth

Weight: 7 kg

Housing: Aluminium

Flow Meter:

Type: Electromagnetic

Operating range: 1-100 litres per minute

Accuracy: $\pm 1\%$

Standard functions: Displays of current flow rate, volume, pressure.

Display Type: 320x240 pixel Backlit LCD Panel.

Pressure Transducer Operating Range: 0 - 16 bar / 0-225PSI (± 1)