

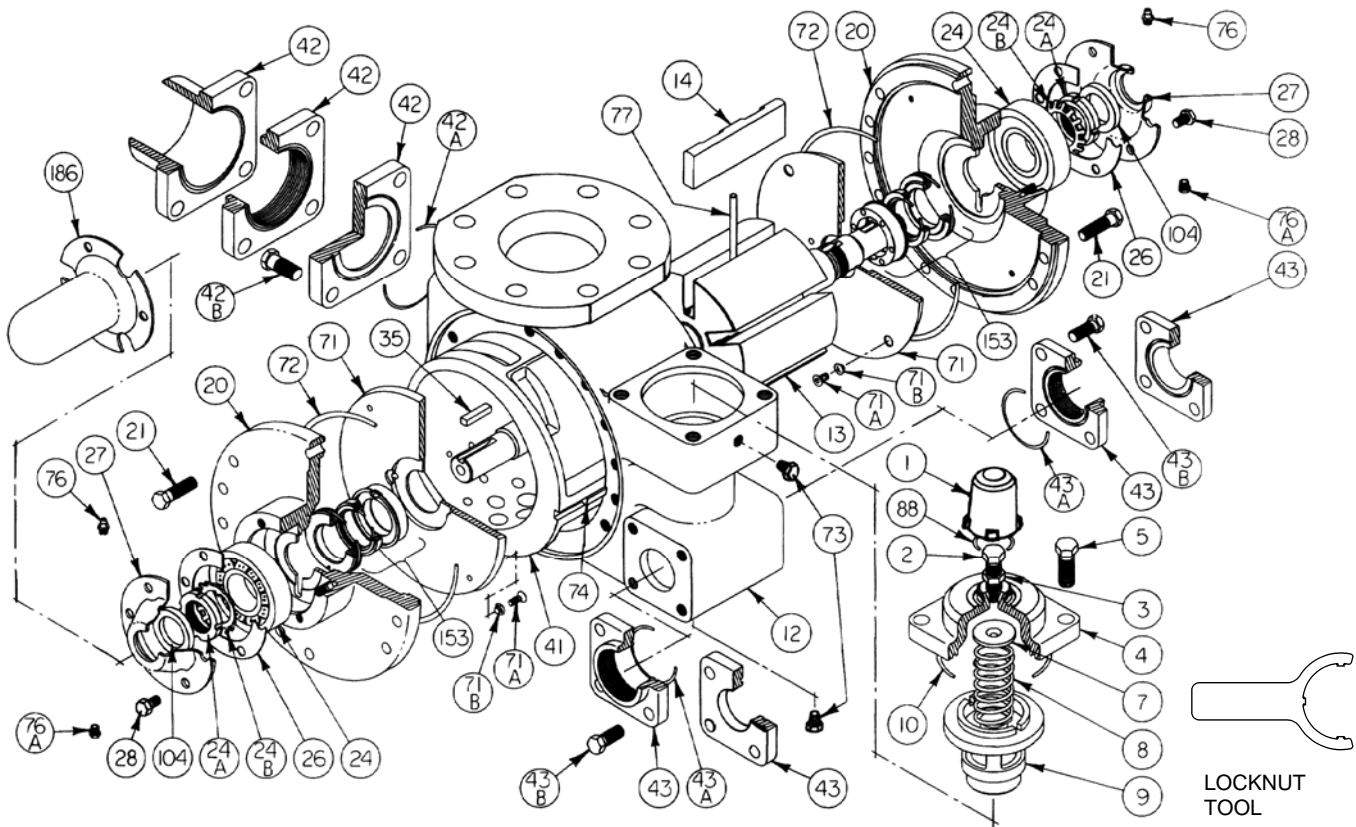
# BLACKMER PARTS LIST

## PUMP MODEL: TLGLF4B

962011 **PARTS LIST**  
Page 1 of 2 **501-E03**

Section 501  
Effective May 2016  
Replaces Jun 2011

Keep with 501-E00 for Installation, Operation and Maintenance Instructions



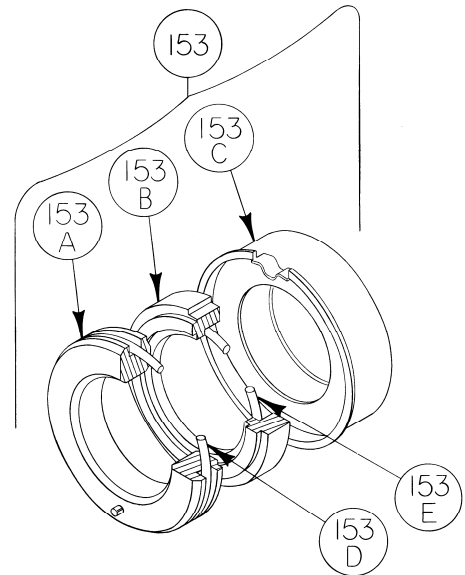
Ref. No.	Description	Parts Per Pump	Part No.	Ref. No.	Description	Parts Per Pump	Part No.
1	Cap - Relief Valve (R/V)	1	413957	42A	O-Ring – Aux. Inlet Flanges	1	701937
2	Adjusting Screw - R/V	1	436310	42B	Capscrew – 2", 3" NPT Flange	4	920663
3	Locknut - Adjusting Screw	1	432039		Capscrew - 3", 4" Weld Flange; Blank Flange		920640
4	Cover - R/V	1	412001	<b>TWIN DISCHARGE PORT OPTIONS</b>			
5	Capscrews - R/V Cover	4	920663	43	Flange - 2" NPT	2	652010
7	Spring Guide - R/V	1	426355		Flange - 2" Slip-on Weld		652024
8	Spring - R/V	1	<sup>1</sup> 472039	43A	O-Ring - 2" Discharge Flanges	2	<sup>1</sup> 702004
9	Valve - R/V	1	452001	43B	Capscrew - Discharge Flange	8	920491
10	O-Ring - R/V Cover	1	<sup>1</sup> 701946	71	Disc	2	<sup>1</sup> 062039
12	Casing	1	012041	71A	Machine Screw - Disc	8	<sup>2</sup> 920015
13	Rotor & Shaft Asy. (includes Ref. No. 24A & 24B)	1	<sup>2</sup> 262041	71B	Lockwasher - Machine Screw	8	<sup>2</sup> 909634
14	Vane - Duravane	6	<sup>1</sup> 092019	72	O-Ring - Head	2	<sup>1</sup> 702039
20	Head	2	032041	73	Gage Plug	2	908198
21	Capscrews - Head	28	920532	74	Key - Liner	1	<sup>2</sup> 182040
24	Ball Bearing	2	<sup>1</sup> 903166	76	Grease Fitting	2	317815
24A	Locknut - Bearing	2	<sup>2</sup> 903541	76A	Grease Relief Fitting	2	701992
24B	Lockwasher - Bearing	2	<sup>1</sup> 903542	77	Push Rod - Composite	3	<sup>1</sup> 122009
26	Gasket - Bearing Cover	2	<sup>1</sup> 385125	88	O-Ring - R/V Cap	1	<sup>1</sup> 701926
27	Bearing Cover	2	041815	104	Grease Seal	2	<sup>1</sup> 331908
28	Capscrews - Bearing Cover	12	920285	186	Shaft, Protector	1	341801
35	Key - Shaft	1	<sup>1</sup> 909183		Tool - Locknut		903092
41	Liner	1	<sup>2</sup> 182000		Kit – Maintenance		898922
<b>AUXILIARY INLET OPTIONS</b>					Kit – Rebuild		899022
42	Flange - 3" NPT	1	652012	<sup>1</sup> Included in Maintenance Kit and Rebuild Kit <sup>2</sup> Included in Rebuild Kit			
	Flange - 2" NPT		652030				
	Flange - 4" Weld		652005				
	Flange - 3" Weld		652007				
	Flange - Blank		652000				

## MECHANICAL SEAL

Ref. No.	Part Name	Parts Per Pump	Part No.
153	Mechanical Seal Assembly	2	<sup>1</sup> 332050
153A	Stationary Seat (Hardened Steel)	2	**
153B	Seal Face (Carbon)	2	**
153C	Jacket Assembly	2	**
153D	O-Ring - Stationary (Buna-N)	2	701934
153E	O-Ring - Rotating (Buna-N)	2	711912

<sup>1</sup> Included in Maintenance Kit and Rebuild Kit

\*\* NOTE: Mechanical Seal Assy. (Ref. 153) is only sold as a complete assembly.  
Ref. Nos. 153A, 153B & 153C are not available as separate replacement parts.



## OPTIONAL HYDRAULIC MOTOR ADAPTER PARTS

Ref. No.	Part Name	Parts Per Pump	Part No.
See Below	<b>Hydraulic Motor Adapter Kit</b>	See Below	892037
26A	Gasket – Hydraulic Motor Adapter	1	381817
28A	Capscrew – Hydraulic Motor Adapter / Head	6	920369
34	Coupling w/ Setscrew – 1.25" straight key hyd. motor shaft	1	906970
35	Key – Coupling	1	909184
76	Grease Fitting	1	317815
76A	Grease Relief Fitting	1	701992
135	Hydraulic Motor Adapter – SAE A Flange	1	041829
135A	Capscrew – Adapter / Motor	2	920510

