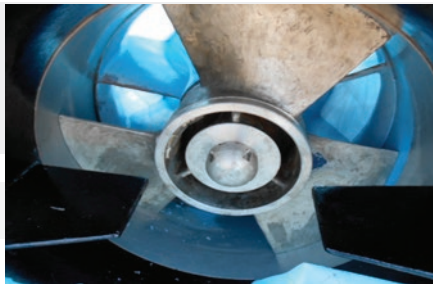
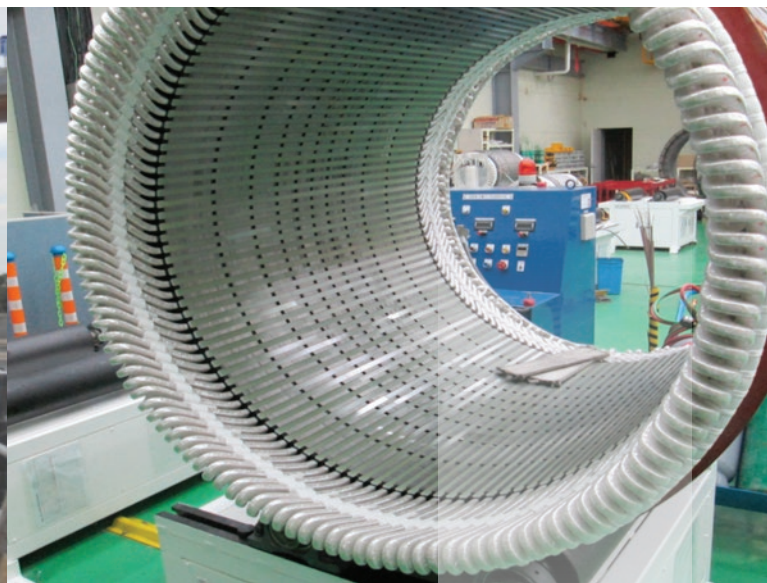


# SUBMERSIBLE MOTOR PUMP AXIAL-FLOW



# A long history full of important experiences



Aturia began to operate in the Centrifugal Pumps sector in 1927 and became a leader in the Submersible Electric Pumps field by patenting the Submersible Motor in 1946. In 1960 it extended its markets to countries in the Mediterranean, America and Asia.

Over time Aturia acquired four top Italian companies: Rotos (1990), Marelli (1990), Audoli & Bertola (2003) and Aris Chiappa (2009).



Rotos was set up in 1919 and manufactured electrical motors, monobloc pumps, multistage pumps and vertical pumps. In 1962 it entered French group GUINARD and became a development centre for multistage pumps.

Based on this experience, it started to produce pumps for the process industry (ISO 2858 and API 610). In 2005 it started to produce magnetic drive pumps in its plant based in Taglio di Po.

## Gruppo Aturia



Founded in 1891, it began to manufacture electrical motors and centrifugal pumps in 1898.

The company was acquired by Aturia together with Rotos in 1990.

Thanks to this acquisition, Gruppo Aturia extended its range of products considerably by including GIEM and ITEM's pumps (monobloc pumps, split case pumps and large-capacity pumps).



The company started producing vertical pumps in 1890 and over the years it strengthened its presence on the market in terms of applications for the heavy industry (steel plants, cooling systems, power plants and the marine sector).

Gruppo Aturia acquired Audoli & Bertola in 2003, thus improving its presence in the industrial sector. Its office in Turin is currently a centre of excellence for fire-fighting systems (NFPA20, FM).



G. Chiappa Fonderie was established in Turin in 1921 as a steel plant and started to manufacture bronze, aluminium and cast iron casts.

In 1940 it began to produce vertical pumps.

For over forty years, in partnership with the world's top gas turbine manufacturers, it has been developing pumps specifically designed for lubrication services.

### TECHNICAL SPECIFICATIONS:

- Capacities up to 50000 cu.mtr./hr.
- Heads up to 20 mtrs.
- Motors upto 1500 kw and more.
- Compact unit in mono-block design.
- Wide range of duties.
- With wet and dry motor options.

### APPLICATIONS:

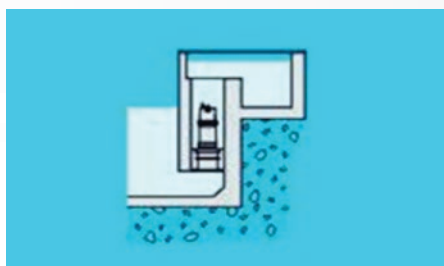
- Mine - Dewatering Systems for process and seepage water and for lowering of water level.
- Dewatering of dams, flood prone areas.
- Pumping activated sludge and raw, untreated, highly turbid water.
- Lift Irrigation as water lift pump from low-level water sumps.
- Pumping waste, storm, service and cooling water.



Flow : Upto 50,000 M<sup>3</sup>/Hr

Head : Upto 25 M

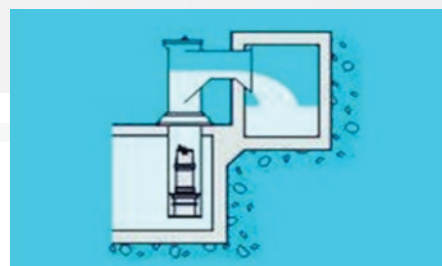
Motor : Upto 1500 HP



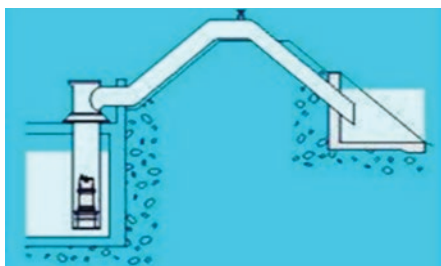
Suitable where the liquid is pumped to a tunnel, channel or basin with a water level that is nearly constant so that shut-off devices are not required.



If the water level on the outlet side of the pump varies considerably flap valves can be installed.



If odors require a closed system, this arrangement can be used with a free discharge, as shown, in order to prevent from water backflash.



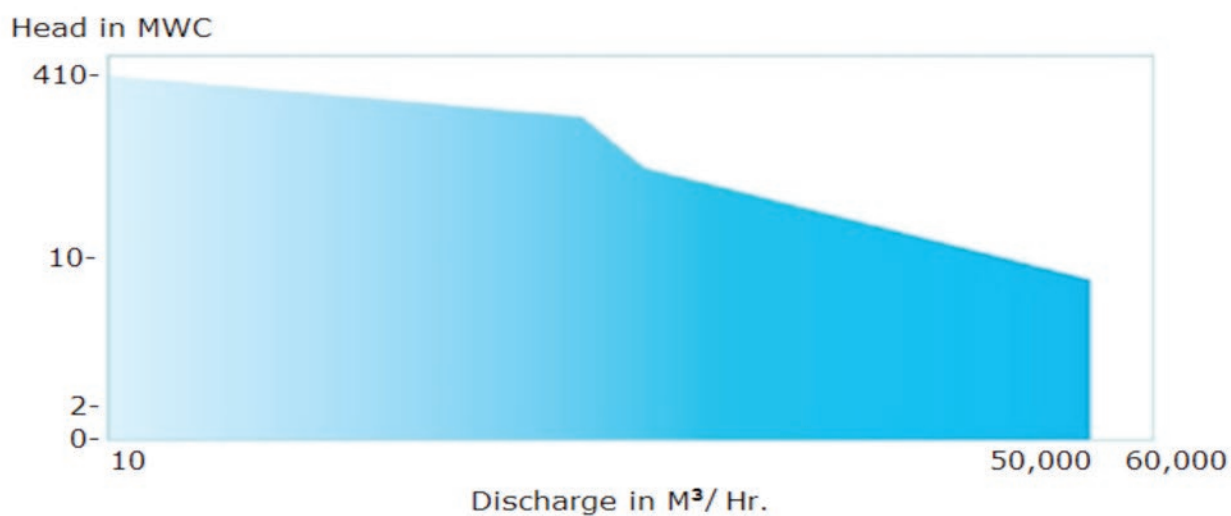
Suitable where the liquid is pumped to a tunnel, channel or basin with a water level that is nearly constant so that shut-off devices are not required.



If the water level on the outlet side of the pump varies considerably flap valves can be installed.



## RANGE CHART



**RANGE AVAILABLE TO MEET EVERY NEED:**

Size : 6" - 38" in bowl diameters or 4" - 30" diameter impellers.

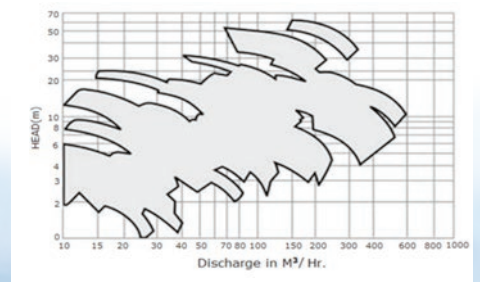
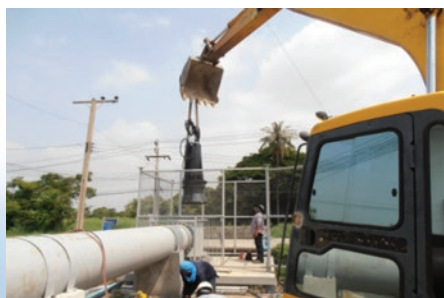
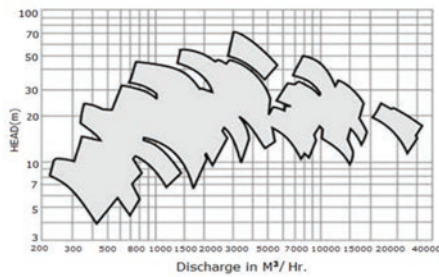
- Capacities from 6 through 40,000 cubic meter per hour.
- Heads up to 80 mtrs.
- Discharge sizes from 2" through 30".
- Motors to 1500 HP / 380 - 6600 V / 3 Ph, 50 or 60 Hz AC.
- Standard temperature operation to 105°F (40°C) as well as warm liquid operation to 150°C oil filled motor.
- With wet and dry motor options.
- With wet and dry motor options.

**CHOICE OF MATERIALS:**

- Pump casing - Cast Iron / Stainless Steel - up to Super Duplex / Ni-Al-Brnz.
- Impeller - Stainless Steel - up to Super Duplex / Ni-Al-Bronze / Other bronze.
- Shaft - Stainless of various grades : 410/420/316/Duplex & Super Duplex.
- Motor Body - Mild Steel / Stainless Steel - up to Super Duplex / Ni-Al-Bronze
- Casing Tube surrounding the motor (optional) - Mild steel / Stainless.
- Rotor Shaft - Steel / Stainless Steel.
- Winding Wire - PVC Insulated Copper / XLPE insulated Copper.
- Thrust Bearings - Stainless Steel.
- Bush Bearing - Carbon.

**APPLICATIONS:**

- Mine - Dewatering Systems for process and seepage water and for lowering of water level.
- Dewatering of dams, flood prone areas.
- Pumping raw untreated water.
- Lift Irrigation as water lift pump from low-level water sumps.
- Simple Modernization of old V.T and bore-well submersible pumps.



Note :  
 Designs subject to change.  
 Other sizes and options available as per requirement.



## INSTALLATION LIST

- Hua Ko Station, Samut Prakan Provincial Administration, Thailand.
- Demangan BBWS Solo Flood control, Indonesia.
- Bang Ta Nai and Bang Sai station, Royal Irrigation Department, Nonthaburi, Thailand
- Bang Lane Station, Royal Irrigation, Nakhon Pathom, Thailand.
- Kud Chiang Sa Station, Royal Irrigation Department, Roi Et Province, Thailand.



## INTERNATIONAL ASSOCIATES

### THAILAND

WPIL (Thailand) Co. Ltd., 23 soi Sathiyuttakam 3, T.Thasai A. Muang, Nonthaburi 11000, Thailand  
 Tel : +66 (2) 952 2561, Fax : +66 (2) 952 3273, Email : jeerasith.k@wpil.co.th; jirawich.k@wpil.co.th  
 Website : www.wpil.co.th

### AUSTRALIA

Sterling Pumps Pty Ltd., 14 Shamet Circuit, Pakenham, Victoria, 3810, Australia  
 Tel : +61 3 9729 5044, Fax : +61 3 9729 3522, Email : anton@sterlingpumps.com.au; brian@sterlingpumps.com.au  
 Website : www.sterlingpumps.com.au

### UK

Mathers Foundry Limited, Park Works, Grimshaw Lane, Newton Heath, Manchester M40 2BA, UK  
 Tel : +44 (0) 161 954 4347, Fax : +44 (0) 161 205 2455, Email : sales@mathersfoundry.co.uk  
 Website : www.mathersfoundry.co.uk

### SOUTH AFRICA

A.P.E Pumps (Pty) Limited., 26 Nagington Road, Wadeville, Germiston, South Africa  
 Tel : +27 11 824 4801, Fax : +27 11 824 2770, Email : peter@psv.co.za; dave@matherandplatt.com  
 Website : www.apepumps.co.za; www.matherandplatt.com

### INDIA

WPIL LIMITED., "Trinity Plaza", 3rd Floor, 84/1A, Topsia Road (South), Kolkata - 700046, (India)  
 Tel : +91 33 3021 6800, Fax : +91 33 3021 6835, Website : www.wpil.co.in



#### GRUPPO ATURIA S.p.A.

Gessate (Milan): 20.000 sq m  
(Covered surface)  
GRUPPO ATURIA's head office  
Tel. +39-0295423200  
E-mail ITALY: vendite@gruppoaturia.it  
E-mail EXPORT: export@gruppoaturia.com



TURIN: 3.000 sq m  
(Covered surface)  
Production site for Fire-fighting units.



Taglio di Po (Rovigo): 3.000 sq m  
(Covered surface)  
Production site for Magnetic drive pumps.



In order to acquire greater expertise and experience for particularly demanding applications (chemical, petrochemical and nuclear sector), Gruppe Rüttschi was acquired by Gruppo Aturia in 2006.

#### RÜTSCHI FLUID AG



Brugg (Switzerland): 5.000 sq m  
(Covered surface)  
RÜTSCHI FLUID AG's head office  
production site for RÜTSCHI process pumps and Sealless/Canned pumps.  
Retailer for GRUPPO ATURIA's pumps.

#### POMPES RÜTSCHI SAS



Mulhouse (France): 2.000 sq m  
(Covered surface)  
POMPES RÜTSCHI SAS' head office  
production site for RÜTSCHI process pumps and vertical pumps for lubrication systems.  
Retailer for GRUPPO ATURIA's pumps.

Gruppo Aturia and Gruppe Rüttschi operate all over the world with a network of agents, retailers and service centres.



20060 Gessate (MI) - ITALY - Piazza Aturia 9 - Tel. +39 02 95423200 - Fax +39 02 95423202  
10156 Torino - ITALY - Corso Romania 501/18  
45019 Taglio di Po (Rovigo) - ITALY - Via dell'Industria 4  
[www.gruppoaturia.it](http://www.gruppoaturia.it)