



P.L. : 1004-D01

Effective  
Replaces

July 2018  
April 2018

**PARTS LIST**  
**PUMPS**  
**SLC24 i - SLC36 i - SLC45 i**

Keep this parts lists with Installation, Operation and Maintenance Instructions.

To order the required spare parts, indicate the desired Reference(s).

- ◆ Sets of parts or parts available to order.

CVT : FEP encapsulated FKM

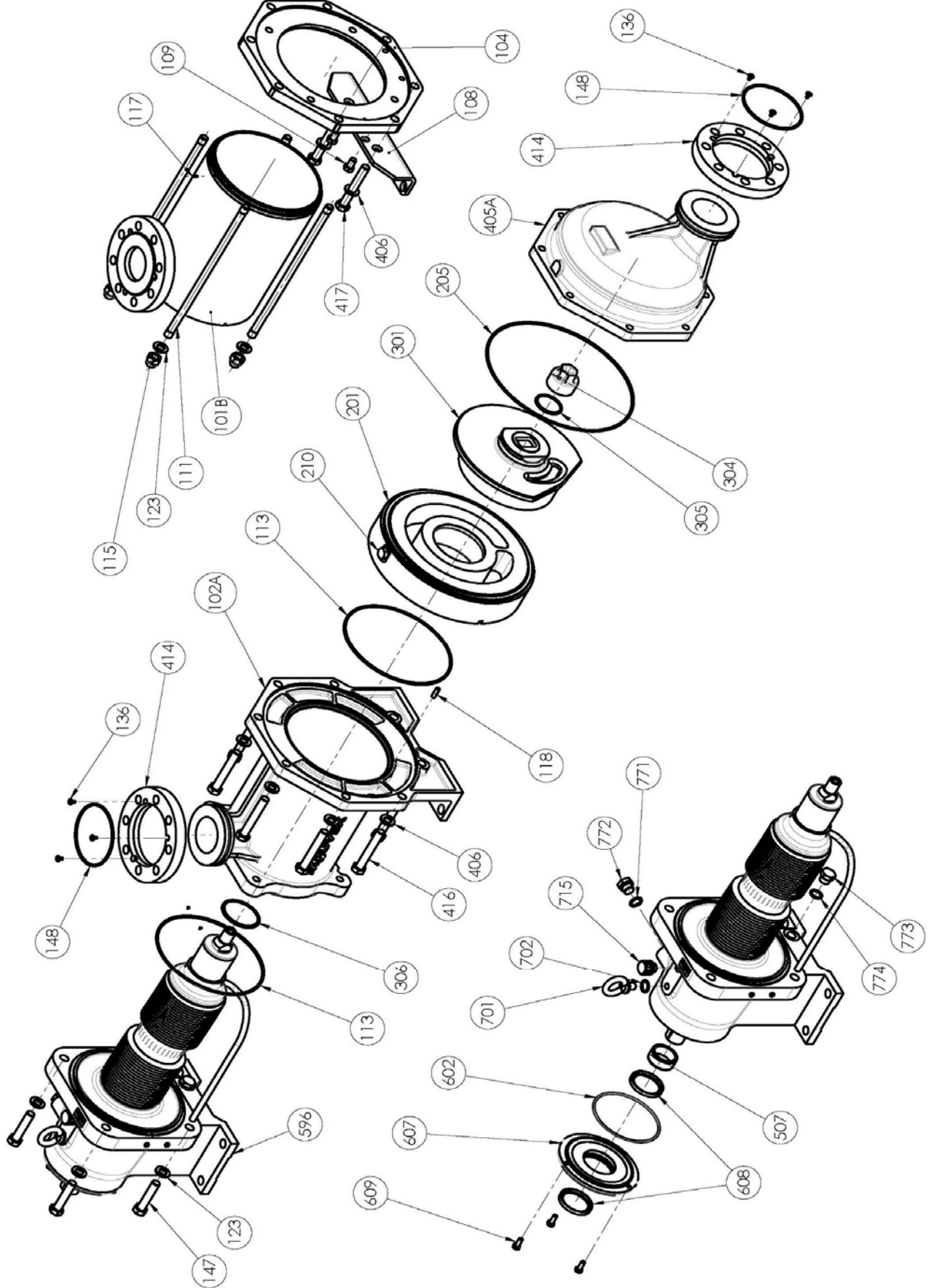
Z.I. la Plaine des Isles - 2 rue des Caillottes F-89000 AUXERRE - France

Tel : +33 (0)3 86 49 86 30 • Fax : +33 (0)3 86 49 87 17

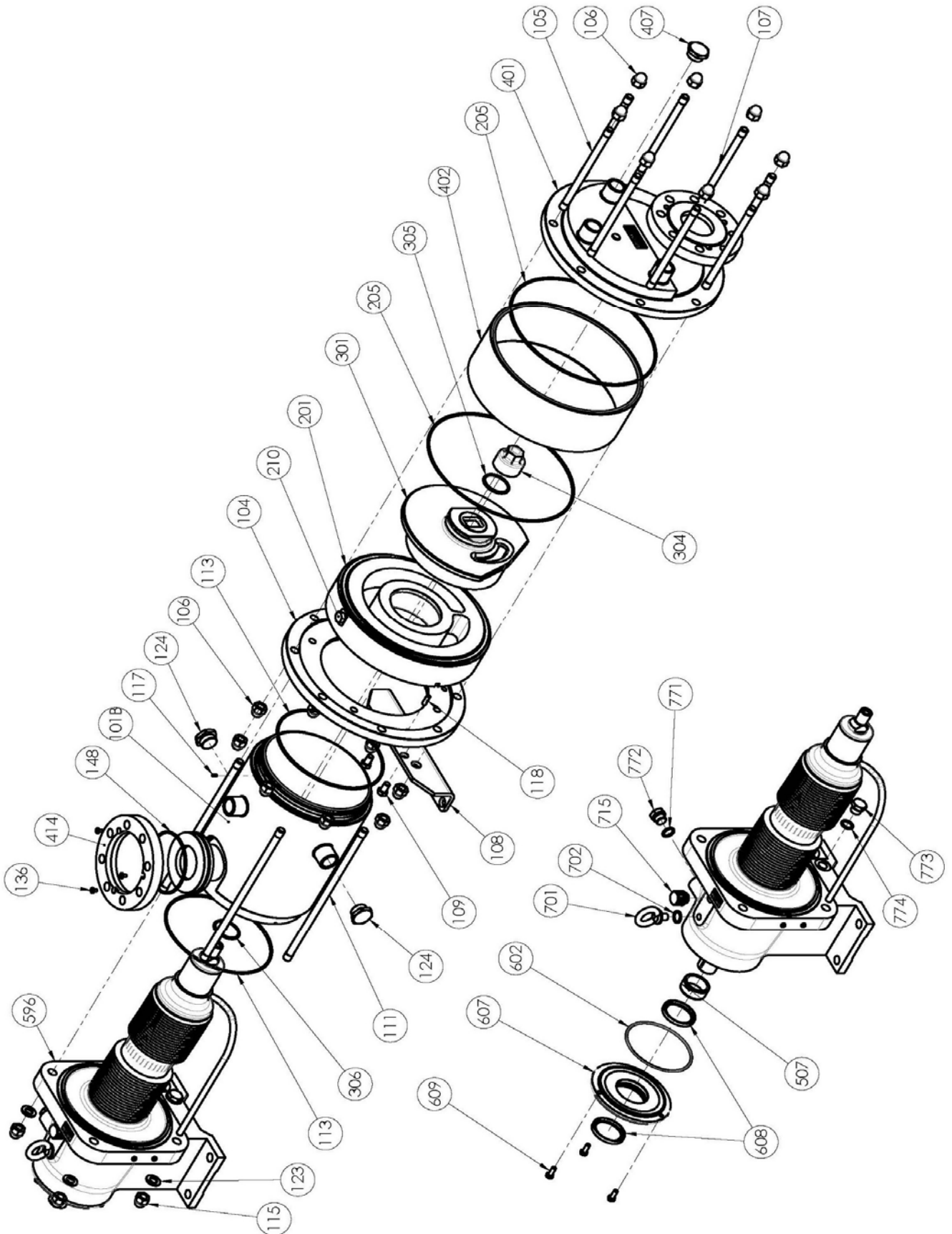
contact@mouvex.com • www.mouvex.com

# SLC24 i - SLC36 i - SLC45 i

## Standard pump & Turn able manifold



# SLC24 i - SLC36 i - SLC45 i Jacketed pump



# SLC24 i

\* 1, 2, 4... : Quantity in equipment - (1), (2), (4)... : Quantity in kit

Item	Available	Description	Qty*	Ref.	Maintenance kit	Wear part
8	◆	<b>PLUGS_BREATHER_LIFTING EYE BOLTS_SEALS</b>	1	312196.00		
701		LIFTING EYE BOLTS	(1)			
702		SEAL	(1)			●
715	◆	BREATHER	1	219240		●
771		SEAL	(1)			●
772		PLUG	(1)			
773		PLUG	(1)			
774		SEAL	(1)			●
9	◆	<b>BEARING COVER_GASKETS_SCREWS</b>	1	315283.00		
507		SEAL RING	(1)			●
602		SEAL	(1)			●
607		COVER	(1)			
608		LIP SEAL	(2)			●
609		SCREW	(3)			
100B	◆	<b>STANDARD MAIN BODY WITHOUT FLANGE SLC 24 36 45</b>	1	316973.00		
102A		MAIN BODY	(1)			
118		PIN	(1)			
100	◆	<b>JACKETED MAIN BODY WITHOUT FLANGE SLC 24 36 45</b>	1	317689.00		
101B		MAIN BODY	(1)			
104		MAIN BODY FLANGE	(1)			
108		SUPPORT FOOT	(1)			
109		SCREW	(2)			
117		PIN	(1)			
118		PIN	(1)			
124		PLUG	(2)			
100B	◆	<b>TURN ABLE MANIFOLD MAIN BODY WITHOUT FLANGE SLC 24 36 45</b>	1	317676.00		
101B		MAIN BODY	(1)			
104		MAIN BODY FLANGE	(1)			
108		SUPPORT FOOT	(1)			
109		SCREW	(2)			
117		PIN	(1)			
118		PIN	(1)			
410	◆	<b>KIT FLANGES MAIN BODY_FRONT COVER PN16 SLC 24_36_45</b>	1	316971.00		
410	◆	<b>KIT FLANGES MAIN BODY_FRONT COVER PN20 SLC 24_36_45</b>	1	316972.00		
136		SCREW	(6)			
148		ROD	(2)			
414		FLANGE	(2)			
119	◆	<b>SCREWS SET SLC 24_45 - STANDARD PUMP</b>	1	316969.00		
123		WASHER	(4)			
147		SCREW	(4)			
406		WASHER	(8)			
416		SCREW	(8)			
119	◆	<b>SCREWS SET SLS 24 SLC 24_45 - JACKETED PUMP</b>	1	312184.00		
105		STUD	(6)			
106		BLIND NUT	(16)			
107		STUD	(2)			
111		STUD	(4)			
115		BLIND NUT	(4)			
123		WASHER	(4)			
119	◆	<b>SCREWS SET SLC 24_45 - TURN ABLE MANIFOLD</b>	1	317679.00		
111		STUD	(4)			
115		BLIND NUT	(4)			
123		WASHER	(4)			
406		WASHER	(8)			
416		SCREW	(6)			
417		SCREW	(2)			

# SLC24 i

\* 1, 2, 4... : Quantity in equipment - (1), (2), (4)... : Quantity in kit

Item	Available	Description	Qty*	Ref.	Maintenance kit	Wear part
200	◆	SET CYLINDER_PISTON	1	313401.00	■	
201		CYLINDER	(1)			●
210		SCREW	(1)			
301		PISTON	(1)			●
304	◆	PISTON NUT	1	219426		●
206	◆	SET OF CVT 'O' RING SEALS	1	317023.00	■	
206	◆	SET OF FKM 'O' RING SEALS	1	317022.00	■	
113		O-RING	(2)			●
205		O-RING	(1)			●
305		O-RING	(1)			●
306		O-RING	(1)			●
400	◆	COMPLETE FRONT COVER SLC 24 36 45 - JACKETED PUMP	1	317690.00		
401		FRONT COVER	(1)			
402		OUTLET TUBE	(1)			
407		PLUG	(1)			
405A	◆	FRONT COVER SLC 24 36 45 - STANDARD_TURN ABLE MANIFOLD	1	230108		
596	◆	COMPLETE TRANSMISSION : WITHOUT BELLOWS MONITORING SYSTEM	1	314202.01	■	●
596	◆	WITH PRESSURE SWITCH BELLOWS MONITORING SYSTEM	1	313466.02	■	●
596	◆	WITH ATEX PRESSURE SWITCH BELLOWS MONITORING SYSTEM	1	313827.01	■	●

# SLC36 i

\* 1, 2, 4... : Quantity in equipment - (1), (2), (4)... : Quantity in kit

Item	Available	Description	Qty*	Ref.	Maintenance kit	Wear part
8	◆	<b>PLUGS_BREATHER_LIFTING EYE BOLTS_SEALS</b>	1	312196.00		
701		LIFTING EYE BOLTS	(1)			
702		SEAL	(1)			●
715	◆	BREATHER	1	219240		●
771		SEAL	(1)			●
772		PLUG	(1)			
773		PLUG	(1)			
774		SEAL	(1)			●
9	◆	<b>BEARING COVER_GASKETS_SCREWS</b>	1	315283.00		
507		SEAL RING	(1)			●
602		SEAL	(1)			●
607		COVER	(1)			
608		LIP SEAL	(2)			●
609		SCREW	(3)			
100B	◆	<b>STANDARD MAIN BODY WITHOUT FLANGE SLC 24 36 45</b>	1	316973.00		
102A		MAIN BODY	(1)			
118		PIN	(1)			
100	◆	<b>JACKETED MAIN BODY WITHOUT FLANGE SLC 24 36 45</b>	1	317689.00		
101B		MAIN BODY	(1)			
104		MAIN BODY FLANGE	(1)			
108		SUPPORT FOOT	(1)			
109		SCREW	(2)			
117		PIN	(1)			
118		PIN	(1)			
124		PLUG	(2)			
100B	◆	<b>TURN ABLE MANIFOLD MAIN BODY WITHOUT FLANGE SLC 24 36 45</b>	1	317676.00		
101B		MAIN BODY	(1)			
104		MAIN BODY FLANGE	(1)			
108		SUPPORT FOOT	(1)			
109		SCREW	(2)			
117		PIN	(1)			
118		PIN	(1)			
410	◆	<b>KIT FLANGES MAIN BODY_FRONT COVER PN16 SLC 24_36_45</b>	1	316971.00		
410	◆	<b>KIT FLANGES MAIN BODY_FRONT COVER PN20 SLC 24_36_45</b>	1	316972.00		
136		SCREW	(6)			
148		ROD	(2)			
414		FLANGE	(2)			
119	◆	<b>SCREWS SET SLC 36 - STANDARD PUMP</b>	1	316970.00		
123		WASHER	(4)			
147		SCREW	(4)			
406		WASHER	(8)			
416		SCREW	(8)			
119	◆	<b>SCREWS SET SLS 36 SLC 36 - JACKETED PUMP</b>	1	312260.00		
105		STUD	(6)			
106		BLIND NUT	(16)			
107		STUD	(2)			
111		STUD	(4)			
115		BLIND NUT	(4)			
123		WASHER	(4)			
119	◆	<b>SCREWS SET SLC 36 - TURN ABLE MANIFOLD</b>	1	317682.00		
111		STUD	(4)			
115		BLIND NUT	(4)			
123		WASHER	(4)			
406		WASHER	(8)			
416		SCREW	(6)			
417		SCREW	(2)			

## SLC36 i

\* 1, 2, 4... : Quantity in equipment - (1), (2), (4)... : Quantity in kit

Item	Available	Description	Qty*	Ref.	Maintenance kit	Wear part
200	◆	SET CYLINDER_PISTON	1	313403.00	■	
201		CYLINDER	(1)			●
210		SCREW	(1)			
301		PISTON	(1)			●
304	◆	PISTON NUT	1	219455		●
206	◆	SET OF CVT 'O' RING SEALS	1	317023.00	■	
206	◆	SET OF FKM 'O' RING SEALS	1	317022.00	■	
113		O-RING	(2)			●
205		O-RING	(1)			●
305		O-RING	(1)			●
306		O-RING	(1)			●
400	◆	COMPLETE FRONT COVER SLC 24 36 - JACKETED PUMP	1	317690.00		
401		FRONT COVER	(1)			
402		OUTLET TUBE	(1)			
407		PLUG	(1)			
405A	◆	FRONT COVER SLC 24 36 45 - STANDARD_TURN ABLE MANIFOLD	1	230108		
596	◆	COMPLETE TRANSMISSION : WITHOUT BELLOWS MONITORING SYSTEM	1	314202.01	■	●
596	◆	WITH PRESSURE SWITCH BELLOWS MONITORING SYSTEM	1	313466.02	■	●
596	◆	WITH ATEX PRESSURE SWITCH BELLOWS MONITORING SYSTEM	1	313827.01	■	●

# SLC45 i

\* 1, 2, 4... : Quantity in equipment - (1), (2), (4)... : Quantity in kit

Item	Available	Description	Qty*	Ref.	Maintenance kit	Wear part
8	◆	<b>PLUGS_BREATHER_LIFTING EYE BOLTS_SEALS</b>	1	312196.00		
701		LIFTING EYE BOLTS	(1)			
702		SEAL	(1)			●
715	◆	BREATHER	1	219240		●
771		SEAL	(1)			●
772		PLUG	(1)			
773		PLUG	(1)			
774		SEAL	(1)			●
9	◆	<b>BEARING COVER_GASKETS_SCREWS</b>	1	315283.00		
507		SEAL RING	(1)			●
602		SEAL	(1)			●
607		COVER	(1)			
608		LIP SEAL	(2)			●
609		SCREW	(3)			
100B	◆	<b>STANDARD MAIN BODY WITHOUT FLANGE SLC 24 36 45</b>	1	316973.00		
102A		MAIN BODY	(1)			
118		PIN	(1)			
100	◆	<b>JACKETED MAIN BODY WITHOUT FLANGE SLC 24 36 45</b>	1	317689.00		
101B		MAIN BODY	(1)			
104		MAIN BODY FLANGE	(1)			
108		SUPPORT FOOT	(1)			
109		SCREW	(2)			
117		PIN	(1)			
118		PIN	(1)			
124		PLUG	(2)			
100B	◆	<b>TURN ABLE MANIFOLD MAIN BODY WITHOUT FLANGE SLC 24 36 45</b>	1	317676.00		
101B		MAIN BODY	(1)			
104		MAIN BODY FLANGE	(1)			
108		SUPPORT FOOT	(1)			
109		SCREW	(2)			
117		PIN	(1)			
118		PIN	(1)			
410	◆	<b>KIT FLANGES MAIN BODY_FRONT COVER PN16 SLC 24_36</b>	1	316971.00		
410	◆	<b>KIT FLANGES MAIN BODY_FRONT COVER PN20 SLC 24_36</b>	1	316972.00		
136		SCREW	(6)			
148		ROD	(2)			
414		FLANGE	(2)			
119	◆	<b>SCREWS SET SLC 24_45 - STANDARD PUMP</b>	1	316969.00		
123		WASHER	(4)			
147		SCREW	(4)			
406		WASHER	(8)			
416		SCREW	(8)			
119	◆	<b>SCREWS SET SLS 24 SLC 24_45 - JACKETED PUMP</b>	1	312184.00		
105		STUD	(6)			
106		BLIND NUT	(16)			
107		STUD	(2)			
111		STUD	(4)			
115		BLIND NUT	(4)			
123		WASHER	(4)			
119	◆	<b>SCREWS SET SLC 24_45 - TURN ABLE MANIFOLD</b>	1	317679.00		
111		STUD	(4)			
115		BLIND NUT	(4)			
123		WASHER	(4)			
406		WASHER	(8)			
416		SCREW	(6)			
417		SCREW	(2)			



## SLC45 i

\* 1, 2, 4... : Quantity in equipment - (1), (2), (4)... : Quantity in kit

Item	Available	Description	Qty*	Ref.	Maintenance kit	Wear part
200	◆	SET CYLINDER_PISTON	1	319054.00	■	
201		CYLINDER	(1)			●
210		SCREW	(1)			
301		PISTON	(1)			●
304	◆	PISTON NUT	1	219455		●
206	◆	SET OF CVT 'O' RING SEALS	1	317023.00	■	
206	◆	SET OF FKM 'O' RING SEALS	1	317022.00	■	
113		O-RING	(2)			●
205		O-RING	(1)			●
305		O-RING	(1)			●
306		O-RING	(1)			●
400	◆	COMPLETE FRONT COVER SLC 24 36 45 - JACKETED PUMP	1	317690.00		
401		FRONT COVER	(1)			
402		OUTLET TUBE	(1)			
407		PLUG	(1)			
405A	◆	FRONT COVER SLC 24 36 45 - STANDARD_TURN ABLE MANIFOLD	1	230108		
596	◆	COMPLETE TRANSMISSION : WITHOUT BELLOWS MONITORING SYSTEM	1	319427.00	■	●
596	◆	WITH PRESSURE SWITCH BELLOWS MONITORING SYSTEM	1	319055.00	■	●
596	◆	WITH ATEX PRESSURE SWITCH BELLOWS MONITORING SYSTEM	1	319056.00	■	●