



A4910 LUBRI

OPTIMIZING THE LUBRICATION PROCESS



MASTER THE LANGUAGE OF YOUR MACHINERY



A4910 LUBRI



OPTIMIZING THE LUBRICATION PROCESS

The A4910 Lubri is a maintenance tool used for monitoring and control of the lubrication process. The A4910 Lubri measures the actual bearing lubrication status and informs the operator when the lubrication state is optimal.

Application of the A4910 Lubri extends the bearing lifetime and saves lubricants. Headphones can be connected to listen to the bearing condition. The A4910 Lubri is simple to operate and also enables you to perform basic measurements and diagnoses of bearing condition.

Now the A4910 Lubri can store the data and perform route measurements as well.



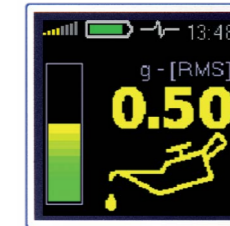
-  Free version of DDS software (limited database size)
- 
 - > Increase bearing lifetime
 - > Basic vibrodiagnostics measurements

BASIC MODE

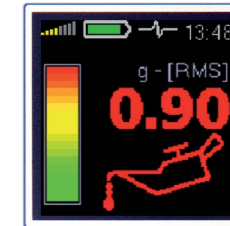
VALUES IN TRAFFIC LIGHT COLOURS TELL YOU WHEN TO ADD THE GREASE



Lubrication OK



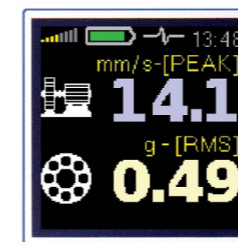
Add grease



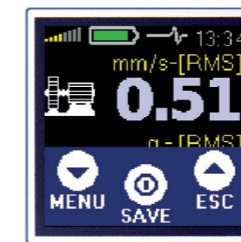
Dry bearing

ADVANCED MODE

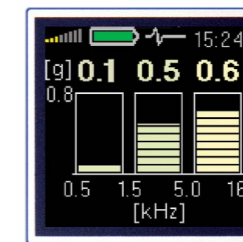
THE ADVANCED MODE ENABLES THE USER TO MEASURE MACHINE VIBRATIONS, BEARING CONDITION AND TO USE THE MEMORY.



Basic measurement



Memory



Frequency bands



Route measurement



INDUSTRIAL DESIGN

- > Heavy-Duty aluminium case
- > More than 8 hours of operation
- > 2AA rechargeable or AA alkaline batteries



SIMPLE TO USE

- > Three button operation
- > Colour graphic display
- > Basic or Advanced mode selection



Adash, spol. s r.o.

Hlubinská 1379/32
702 00 Ostrava

e-mail: info@adash.cz

tel.: +420 596 232 670

+420 596 232 687

fax.: +420 596 232 671

www.adash.com

www.adash.cz

© Adash 2016

Your local distributor can be found on our website www.adash.com under 'Contacts'.

MASTER THE LANGUAGE OF YOUR MACHINERY

