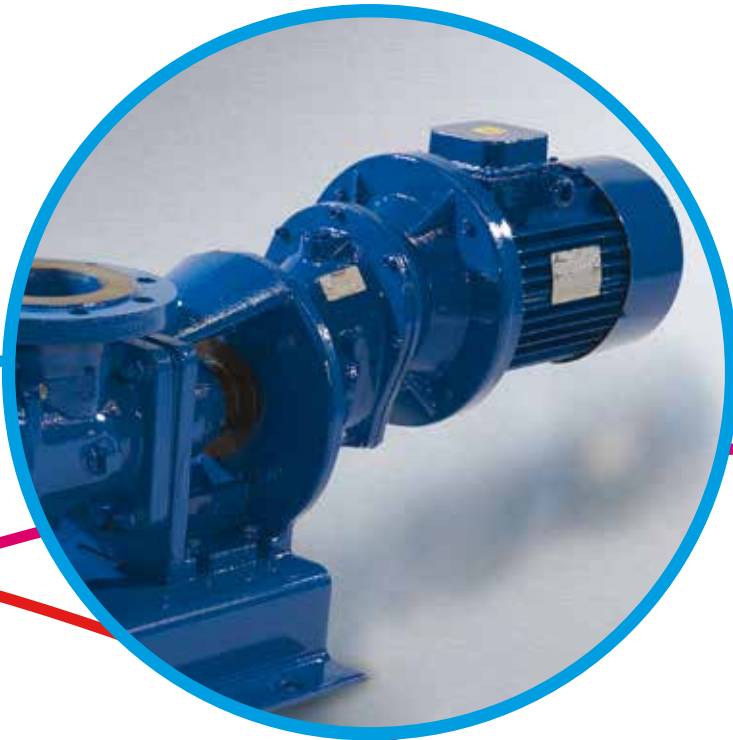


# Mono™

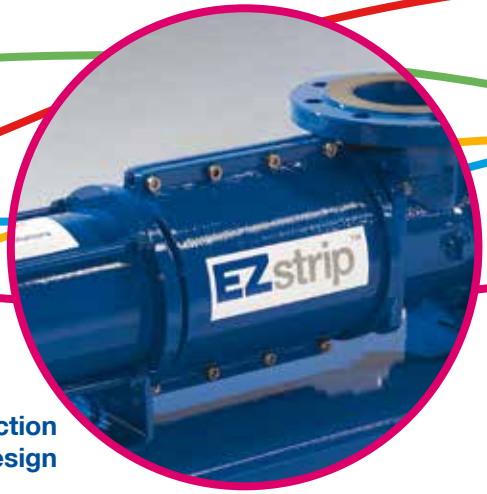
## EZstrip™ Transfer Pump



**NOV** Mono

One Company, Unlimited Solutions





Innovative suction chamber design

## What can you do in 2½ minutes?

NOV Mono first began manufacturing progressing cavity pumps in 1935 and have continued to engineer industry-leading pump ranges for over 75 years.

The EZstrip™ transfer pump is the latest revolutionary new pump design which will change the way you work. By simply removing a few screws, the suction chamber is easily dismantled, giving you access to take out any rag build-up, a process that takes less than 2½ minutes.

A greater build up of rags may take longer to remove, but you can see the potential time savings you would achieve when maintaining a pump!

## De-Rag an EZstrip™ Pump

### 1. Remove screws to split suction chamber in half



### 2. Remove rags from the coupling rod area and simply bolt back together



## Features & Benefits

The EZstrip™ transfer pump is an extension of our existing and popular Compact C Range and is available in cast iron or stainless steel, with a choice of rotor and stator materials, including WRAS compliant elastomers, to suit individual applications.

- Quick and easy de-rag, in place
- Requires only spanners and an allen key to maintain
- Reduced maintenance downtime and labour savings
- No need to disconnect suction and discharge pipework
- Eliminates dismantling lengths
- Can be retrofitted into existing Compact C installations
- Operational parameters are unaffected

---

**Capacity** up to 225m<sup>3</sup>/h

---

**Pressure** up to 12 bar

---

**Temperature** -10°C up to 100°C

---

**Typical applications:** Domestic and industrial effluents, hydrated lime slurry, sludge, shear sensitive latex emulsion, milk curds, sauces, fruit juices, industrial chemicals and detergents, starch slurries, coating clays, gypsum and silicate, paper stocks and agricultural slurries



## Maintain in Place (M.I.P.)

To minimize the time and cost involved when maintaining a progressing cavity pump, the EZstrip™ transfer pump can easily be maintained in place, without disconnecting or removing any pipework.

Currently, the removal of rotating parts from a typical progressing cavity pump can take a full day.

With the EZstrip™ transfer pump, the full drive train including rotor, stator, shaft, rod and seal can be removed in less than 4 minutes.

**1. Unscrew retaining sleeve**



**2. Remove new split coupling rod sleeve**



**3. Unscrew and remove tie rods**



**4. Lift rotor and stator out of the pump**



**5. Pull back thrower guard and push pin out from the stub shaft**



**6. Remove drive train**





Rotating parts are easy to replace

## Cost Savings

To fully appreciate the potential cost savings when installing an EZstrip™ transfer pump, the following examples have been calculated:

### DE-RAGGING

	Standard	EZstrip
Maintenance time per de-rag incident	4 hours	15 minutes
Cost per de-rag incident	£140	£8.75
<b>SAVINGS PER INCIDENT</b>		<b>£131.25</b>

### PUMP MAINTENANCE

	Standard	EZstrip
Pump maintenance time per incident	8 hours	30 minutes
Cost per incident	£280	£17.50
<b>SAVINGS PER INCIDENT</b>		<b>£262.50</b>

Pump maintenance hours per pump life	40	2 1/2
Cost over pump life	£1,804	£113
<b>SAVINGS OVER PUMP LIFE</b>		<b>£1,691</b>

Pump maintenance hours per pump life for full asset base	600	37 1/2
Cost over pump life	£27,058	£1,691
<b>SAVINGS OVER PUMP LIFE - FULL ASSET BASE</b>		<b>£25,367</b>

### ASSUMPTIONS

Labour costs per hour	£35
Pump life	10 years
Asset base / pump population	15
Inflation per annum	5%

A typical pump will have one pump maintenance intervention every two years  
Calculations based on an average sized pump eg: C17K 40m<sup>3</sup>/h at 250 rpm)

### Maintain in place

Quick and easy removal of rotating parts with no electrical disconnection required.

### Drive train assembly

A pre-assembled drive train is available, with 2 year warranty, to allow an even faster re-assembly time.

### Eliminate dismantling lengths

Suction and discharge pipework can remain connected, so dismantling space is not required.

### Materials of construction

Available in cast iron or stainless steel, with a choice of rotor and stator materials to suit individual applications. Available with WRAS compliant elastomers.

### Low running speeds

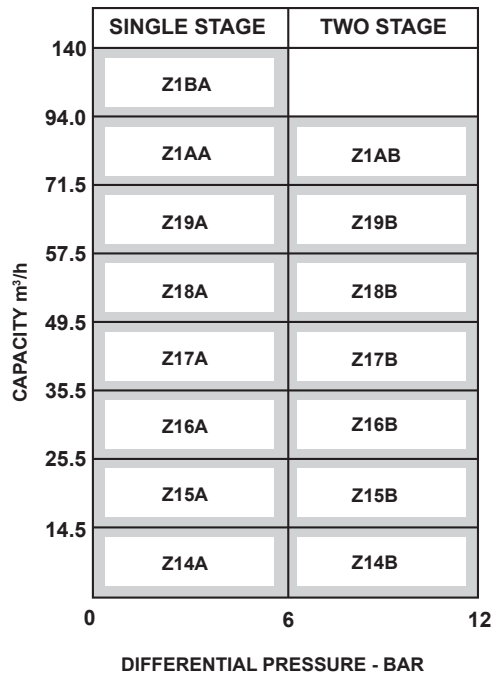
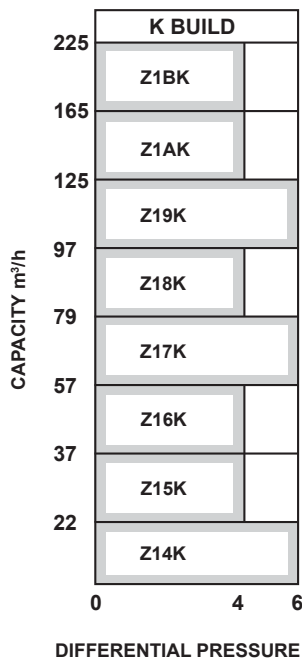
Reduced wear for a longer working pump life which extends the periods between routine maintenance.

### Baseplate

Pumps can be supplied on a baseplate to ease installation.



## Performance Data



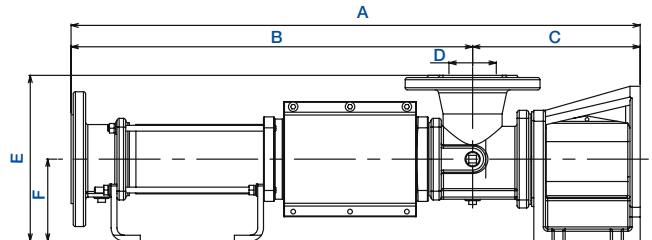
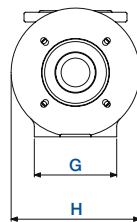
\*Contact Mono for EZstrip™ high pressure pumps

## Dimensions

MODEL	A	B	C	D	E	F	G	H
Z14K	986	756	230	65	227	112	140	200
Z15K	1102	882	220	80	232	112	140	200
Z16K	1272	1036	236	100	255	125	160	250
Z17K	1478	1198	280	125	310	150	180	300
Z18K	1654	1374	280	125	310	150	180	300
Z19K	1856	1541	315	150	345	160	200	300
Z1AK	2007	1692	315	150	345	160	200	300
Z1BK	2437	2009	428	200	450	225	290	340

MODEL	A	B	C	D	E	F	G	H
Z14A	781	551	230	65	227	112	140	200
Z14B	986	756	230	65	227	112	140	200
Z15A	842	622	220	80	232	112	140	200
Z15B	1159	882	277	80	245	125	160	250
Z16A	960	724	236	100	255	125	160	250
Z16B	1355	1036	319	100	280	150	180	300
Z17A	1110	830	280	125	310	150	180	300
Z17B	1478	1198	280	125	310	150	180	300
Z18A	1246	966	280	125	310	150	180	300
Z18B	1742	1374	386	125	320	160	200	300
Z19A	1394	1079	315	150	345	160	200	300
Z19B	1856	1541	315	150	345	160	200	300
Z1AA	1476	1161	315	150	345	160	200	300
Z1AB	2159	1757	402	150	410	225	260	285
Z1BA	1794	1366	428	200	450	225	290	340



All dimensions in mm's, unless otherwise stated and for guidance only.  
For full certified drawings or assistance in selecting a pump, please contact Mono.

## Europe

Mono Pumps Ltd, Martin Street, Audenshaw  
Manchester, M34 5JA, England  
T. +44 (0)161 339 9000  
E. [info-mono@nov.com](mailto:info-mono@nov.com)

NOV Mono, 2 Venture Road  
University of Southampton Science Park  
Chilworth, Southampton  
Hampshire, SO16 7NP, England  
T. +44 (0)23 8076 0000  
E. [Mono-oilandgas@nov.com](mailto:Mono-oilandgas@nov.com)

NOV Mono, 56, rue du Pont  
88300 Rebeuville, France  
T. +33 (0)3 29 94 26 88  
E. [monofrance@nov.com](mailto:monofrance@nov.com)

## Asia

Mono Pumps Ltd, Building 5, Madong Industrial Park  
1250 Sicheng Road, Malu Town, Jiading District  
Shanghai 201801, P.R. China  
T. +86 (0)21 3990 4588  
E. [monoshanghai@nov.com](mailto:monoshanghai@nov.com)

## Australasia

Mono Pumps (Australia) Pty Ltd  
75 Frankston Gardens Drive  
Carrum Downs, Victoria 3201, Australia  
T. 1800 333 138  
E. [ozsales@nov.com](mailto:ozsales@nov.com)

Mono Pumps (New Zealand) Ltd  
35-41 Fremlin Place, Avondale  
Auckland 1026, New Zealand  
T. +64 (0)9 829 0333  
E. [info@mono-pumps.co.nz](mailto:info@mono-pumps.co.nz)

## Africa

NOV Monoflo, No. 10 Dipka Road  
Kaymore Industrial Area  
Stikland, Bellville 7530  
Cape Town, South Africa  
T. +27 (0)21 941 2900  
E. [monofloafrica@nov.com](mailto:monofloafrica@nov.com)

## Americas

Moyno, 8708 W. Little York Rd, Suite 100  
Houston, Texas 77040, USA  
T. +1 281 854 0300  
E. [moyno@nov.com](mailto:moyno@nov.com)

Moyno, 1895 W. Jefferson Street  
Springfield, Ohio, 45506, USA  
T. +1 877 486 6966  
E. [moyno@nov.com](mailto:moyno@nov.com)

[www.mono-pumps.com](http://www.mono-pumps.com)



Published information other than that marked CERTIFIED does not extend any warranty or representation, expressed or implied, regarding these products. Any such warranties or other terms and conditions of sales and products shall be in accordance with Mono Pumps Limited standard terms and conditions of sale, available on request.

© 2013 Mono Pumps Limited. All Rights Reserved. Literature reference: MPSB/011/01/R6

Mono™ is a registered trademark of Mono Pumps Ltd.  
Registered in England No 300721



One Company, Unlimited Solutions