

THE CLEVER ALTERNATIVE

OVATIO PUMP HOSES

Outstanding durability, cost-efficiency and reliability.



Mining & Construction



Environmental technology



Food & Beverage



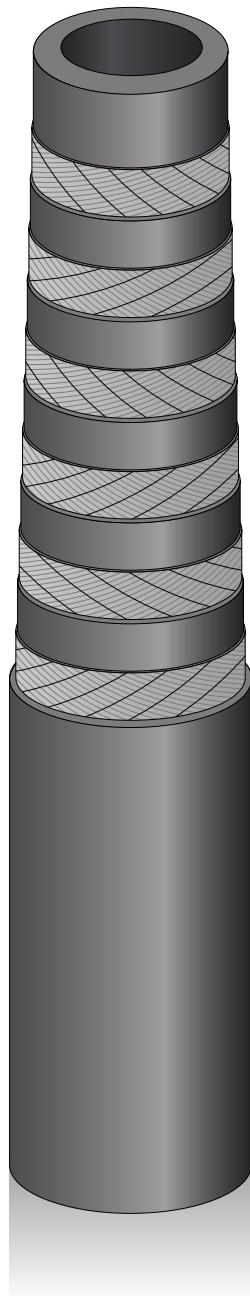
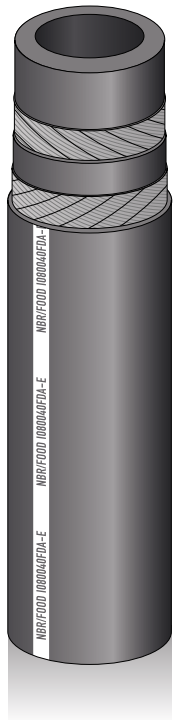
Chemical



Paints & Coatings



Pharmaceuticals



●..... LARGE VARIETY OF MATERIALS

for food, oils & greases, cleaning agents and shear-sensitive media. The hoses are optimally suited for highly viscous, abrasive and aggressive liquids with high solids concentrations.



●..... HIGH-STRENGTH NYLON MICRO FABRIC

for exceptional resistance and long service life. The specially arranged fabric structures give the hose high restoring forces and thus reliable suction performance up to 9.5 m water column as well as optimal dosing properties.

●..... UNIFORM WALL THICKNESS

for reproducible service life and economical lubricant consumption. The hoses are manufactured with tight tolerances and consistent wall thicknesses over the entire length.

You can find your individual contact at:

Web www.axflow.de

Tel. 0800 293 5693 | **Email** info@axflow.de

 **AXFLOW**
fluidity.nonstop



OVATIO PUMP HOSES



OVATIO pump hoses are drawing on more than fifty years of experience with peristaltic pump technology. Developed to the latest design criteria and manufactured with high-precision processes, OVATIO hoses reliably withstand the toughest demands.



RANGE OF DIMENSIONS

Hose	OVATIO BRE-10	OVATIO BRE-15	OVATIO BRE-20	OVATIO BRE-25	OVATIO BRE-32	OVATIO BRE-40	OVATIO BRE-50	OVATIO BRE-65	OVATIO BRE-80	OVATIO BRE-100
Size	10 mm	15 mm	20 mm	25 mm	32 mm	40 mm	50 mm	65 mm	80 mm	100 mm
Suited for	Bredel 10	Bredel 15	Bredel 20	Bredel 25	Bredel 32	Bredel 40	Bredel 50	Bredel 65	Bredel 80	Bredel 100

OUTSTANDING DURABILITY

Special polymer/rubber compounds and the advanced vulcanization process ensure maximum resistance to abrasive liquids. In this way, they give the hose the necessary elasticity for particularly long service life.

EXCELLENT SUCTION LIFT

Multiple fabric layers of high-strength nylon microstructures generate a reliable rebound effect to restore the hose to its original shape after compression and achieve excellent suction lift up to 9.5m head of water.

REPRODUCIBLE DOSING ACCURACY

Due to the unique layered structure of the high-strength nylon microfabric, OVATIO hoses work reliably and with reproducible dosing accuracy.

COST-EFFICIENT AND RELIABLE






Long service life and uniform wall thicknesses reduce spare parts costs, service downtime and lubricant – while improving your operating efficiency with strong suction performance and optimal dosing capabilities.



OVATIO PUMP HOSES

- ✓ **COST SAVINGS**
due to long durability and high-quality manufacturing processes
- ✓ **SHORTER SERVICE TIMES**
due to reliable operation and reproducible service lives
- ✓ **LESS CONSUMPTION**
due to economical use of lubricants as a result of the precision surfaces
- ✓ **RELIABLE PRODUCT QUALITY**
due to perfectly matching chemical properties
- ✓ **OPTIMUM OPERATING EFFICIENCY**
due to outstanding suction performance and optimum dosing characteristics

THE PERFECT MATERIAL FOR YOUR APPLICATION

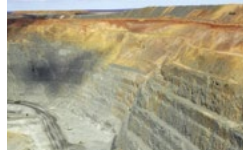
	Material	Max. temperature	Working pressure	Properties
	NR	-10°C to 80°C	16 bar	Outstanding abrasion resistance. Generally resistant to diluted acids and alcohols. Highly resilient with excellent abrasion resistance. This is the most widely-used peristaltic hose. Generally suitable in lightly corrosive chemical applications and with abrasive slurries etc.
	NBR	-10°C to 80°C	16 bar	Resistant to oils, alkalis, greases and detergents. The inner layer is from NBR and the outer layer is from NR to afford the optimal mechanical resistance.
	NBR Food, black	-10°C to 80°C	16 bar	For all food products including oils and greases. Complies with food grade standards EC 1935/2004. The inner layer is made of NBR, food grade approved for hygienic applications. The outer layer is made of NR for optimal mechanical resistance.
	EPDM	-10°C to 90°C	16 bar	High chemical resistance to concentrated acids, corrosive chemicals, ketones. The inner liner is made of EPDM and the outer is made of NR for optimal mechanical resistance.
	Hypalon/CSM	-10°C to 80°C	16 bar	For highly corrosive products and high concentration acids. The inner layer is made from Hypalon/CSM and the outer from NR for optimal mechanical resistance.



OVATIO PUMP HOSES

APPLICATION EXAMPLES

We have delivered OVATIO hoses to a wide range of applications. These are some examples:



Food production	Brewing processes	Construction materials processing	Mining	Water treatment
Animal fat	Waste yeast	Aerated concrete & mortar	Abrasive slurry	Waste water
6 bar	4 bar	12 bar	15 bar	5 bar
60°C	20°C	20°C - 50°C	65 °C	20 °C
NBR Buna	NBR	EPDM	NR	NR
Continuous operation	Batch operation	Batch operation	Continuous operation	Batch operation

AVAILABLE ON STOCK FROM OUR EUROPEAN DISTRIBUTION CENTRE

The full range of various materials and dimensions is available directly from stock at AxFlow. Also find out about the attractive pricing structure with which we offer OVATIO pump hoses. Price comparison pays off!



Express shipping from stock



ALSO FROM OVATIO: LUBRICANT FOR YOUR HOSE PUMP

The glycerine-based lubricant is formulated for the best lubricating and cooling characteristics and provides optimum hose life. As an H1 lubricant with NSF® registration, OVATIO can also be used in the food sector.



Let us support you with individual expert advice. Please find your regional contact in technical sales at www.axflow.de

fluidity.nonstop® is our promise of comprehensive service, specialist advice and expert knowledge of your processes and products. We are backed by decades of experience and technology from the world's leading manufacturer. AxFlow is Europe's first contact for pumps, mixing technology, heat exchangers, homogenisers, valves and technology in the process industry.

AxFlow GmbH Germany & Switzerland · Head office: Theodorstr. 105 · 40472 Düsseldorf, Germany
Swiss branch: Eptingerstr. 41 · 4132 Muttenz, Switzerland · www.axflow.ch · info@axflow.ch
www.axflow.de · info@axflow.de · Telephone +49 211 23806-0 · [LinkedIn](https://www.linkedin.com/company/axflow-gmbh) / axflow-gmbh

