



fluidity.

nonstop

IT'S ABOUT KEEPING YOUR PROCESSES RUNNING



Food and Beverage

 **AXFLOW**



fluidity.
nonstop

IT'S ABOUT KEEPING YOUR PROCESSES RUNNING

About AxFlow

Part of Axel Johnson AB with sales of over 7 billion euro and 20,000 employees worldwide, the AxFlow Group is one of Europe's largest suppliers of technical pumps with offices and service locations in 26 European countries employing nearly 500 people in total.

In the UK AxFlow has over 50 years history operating from 5 locations across the country from which it supplies a large range of process pumps and a comprehensive pump service and repair package.



AxFlow has developed *fluidity.nonstop* a concept through which we provide products and services that encompass all aspects connected with the smooth running of process pumps.

The most comprehensive portfolio of food process pumps in the UK

With our recently expanded centrifugal pump range and our already comprehensive array of positive displacement pumps, AxFlow now offer the largest range of pumps suitable for food and beverage applications in the UK.

Waukesha Cherry-Burrell

Now part of SPX, Waukesha Cherry-Burrell has a long history in the food, dairy, beverage and industrial process industries. Known for its exceptional quality and precision made components, the Waukesha Cherry-Burrell brand is synonymous with pumps designed for use in hygienic applications.



Wilden is one of the world's largest manufacturers of air operated double diaphragm pumps. Within Europe, Wilden has a history with AxFlow that goes back more than 40 years that has resulted in AxFlow developing a deep knowledge of their products and large stocks held at our European Distribution Centre.

Gruppo Aturia

The oldest pump manufacturer in Italy tracing its routes back to 1889, Gruppo Aturia employs over 250 people at its four manufacturing facilities in Italy and France. The group manufactures pumps for the utilities, process and oil/gas sectors and has recently absorbed the entire workforce of Caster Pumps.

WEMCO PUMP

Part of the Weir group, Wemco Pumps are based in France and has specialised in solid handling pumps since 1953. Their product range is centred around the use of unique vortex impellers and abrasion resistant materials that allow their pumps to transfer solid laden and abrasive liquids.



Mouvex, was founded in 1906 and is a leading manufacturer of positive displacement pumps. They have become experts in the manufacture of eccentric rotating and vane pumps for the food industry.

realax | hose pumps

Realax is a major force in the fluid handling industry. Bringing a new comprehensive range of Peristaltic pumps for handling an extraordinary range of media and drawing on vast industry and application experience.



Blackmer is the world's leading manufacturer of rotary-vane pumps. Blackmer's unique sliding-vane design is now recognised world-wide for handling industrial process fluids, Volatile or Organic Compounds, abrasive slurries and viscous liquids.



First established in 1984, Almatec has become the respected world leader in the field of pneumatic diaphragm pumps due to a combination of consistent innovation and German product quality.



Pulsafeeder has been a leader in fluid handling technology since the early 1940's, when they pioneered the hydraulically actuated diaphragm metering pump principle. We are world leaders in magnetic driven gear pumps.



Part of IDEX, OBL has one of the largest metering pump portfolios including plunger, mechanical diaphragm and hydraulic diaphragm types. Established in 1975 OBL has seen dramatic growth due to their design flexibility and competitive pricing.

Experts in pumps associated with food and beverage manufacture.

AxFlow has been supplying pumps to the Food and Beverage sector for over 50 years, so we understand the pros and cons of the various different pump types available to us. We like to think we have the technically correct and most cost effective answer for every application.

Dairy Products

The biggest challenge associated with dairy products is hygiene and the ability to clean the pumps completely. We have a range of hygienic pumps including circumferential piston, eccentric disc and centrifugal models with both EHEDG and 3-A certification.

Beverages

The production of beverages often requires the movement of large volumes of water or delicate liquids such as fruit juice or beer. Consequently, we have several ranges of stainless steel centrifugal pumps (all of which can be ATEX certified), along with circumferential piston, peristaltic and eccentric disc pumps for the more sensitive applications.

Bakery

The AxFlow range includes every pump you'll ever need to cope with the various bakery ingredients and products such as batters, doughs, fruit fillings, creams and liquid sweeteners.

Sauces

Sauces represent many challenges, many are shear sensitive while some are thixotropic. At AxFlow we have several PD pump types including circumferential piston, eccentric disc and peristaltic all of which are capable of coping with the complexities of handling sauces.

Molasses and Syrups

Sugar based products can be hot or highly viscous; when viscous we can offer circumferential piston, lobe, and eccentric rotating disc pumps many of which are angle fed and sealed in such a way as to cope with issues related to crystallisation. In addition we also have with numerous models capable of handling liquids up to 300°C.

Oils

Oils can display either low or high viscosities dependant upon their temperature. We have many pumps capable of handling these various viscosities and many capable of handling the high temperatures.

Prepared Food

A large group of products with many issues when it comes to pumping. Of particular importance is a sensitive pumping action that keeps the various components of the product together but, without damaging them. Our wide range of pump types (many designed with food processes in mind) make it easier for us to select the correct pump technology for the job rather than the nearest approximation.

Flavourings and Colours

Exact measurement and viscosity are the two key issues when delivering flavourings and colours - we have several choices of metering, eccentric disc and peristaltic pumps.

Chocolate Products

Chocolate products are extremely difficult to pump as they are not only viscous and shear sensitive, but coat internal surfaces. We have several solutions for chocolate all of which have sealing systems designed for chocolate related products.

CIP Chemicals

The delivery of CIP requires the ability to withstand aggressive chemicals and temperatures well over 100°C. We have positive displacement, turbine and centrifugal pumps all constructed from stainless steel and able work as part of CIP delivery systems.

Water

The manufacture of food and beverage products often requires large volumes of water, with our expanded centrifugal range, we now have a multitude of pumps suitable for small duties all the way up to large double suction units.

Waste

Waste products can take on many forms when it comes to food production, we have a range of options such as our Waukesha centrifugal and Wemco vortex and chopper pumps that can handle the most difficult of waste liquids including animal parts, feathers and fibres.

Range Summary

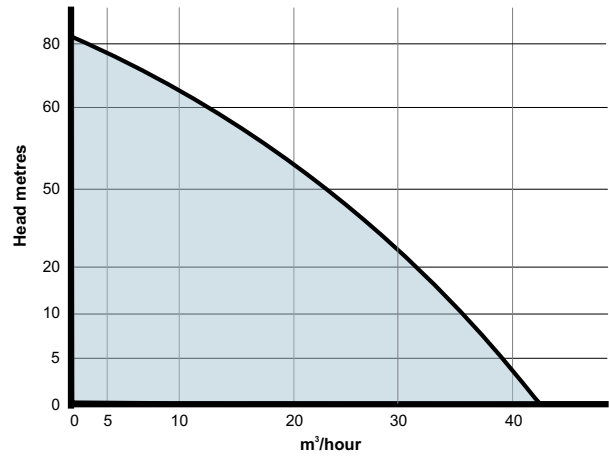
		Hygienic Standards			CIP	ATEX	Solids	Self Priming	Max cP	Max m	Max m ³ /hr	Max bar	Max °C	Page Nos
		FDA	EHEDG	3A										
AOD Pumps														
SANIFLO	Standard sanitary	Wilden			✓	Ex			20,000	80	40	10	176	6
HS SANIFLO	Increased sanitary	Wilden	EHEDG	3A	✓	Ex			20,000	80	55	10	176	6
BIOCOR	Highly sterile design	Almatec	EHEDG	3A	✓	Ex			10,000	70	18	10	176	7
Lobe														
MDL	Standard hygienic tri-lobe	Waukesha	EHEDG	3A	✓				50,000	100	120	10	93	8
Circumferential Piston Pumps														
UNIVERSAL I	High spec hygienic	Waukesha		3A					200,000	150	100	14	148	8
UNIVERSAL II	High spec hygienic	Waukesha	EHEDG	3A	✓	Ex			200,000	350	100	35	148	9
420/520	High spec hygienic	Waukesha		3A	✓				200,000	140	190	14	176	9
Peristaltic Pumps														
APY	Laboratory tube	Realax	FDA			Ex			10,000	20	0.9	2	100	10
IP	Hose	Realax	FDA			Ex			25,000	80	1.5	8	120	11
ISI	Hose	Realax	FDA			Ex			25,000	80	25	8	120	11
RP	Hose	Realax	FDA			Ex			25,000	150	50	15	120	11
Vane Pumps														
NP-SNP Series		Blackmer				Ex			22,000	138	110	15	260	12
SVM		Aturia	FDA			Ex			3,000	130	2	250	300	12
P Series		Mouvex				Ex			8,500	120	100	20	250	13
Eccentric Disc Pumps														
S Series		Mouvex	FDA		✓	Ex			3000	100	16	10	80	14
C & SLS Series		Mouvex	FDA	EHEDG	3A	✓	Ex		3000	160	35	16	150	14
Centrifugal Pumps														
ND	End suction ISO 2858	Aturia			✓	Ex			100	130	1500	16	200	15
NDM	End suction ISO 2858	Aturia			✓	Ex			100	130	300	50	300	15
C Series	Hygienic end suction	Waukesha	FDA		3A	✓			200	90	180	16	100	16
ULN-UHN	Hygienic end suction	Finder			✓	Ex			200	85	4,000	16	140	16
UC Series	Hygienic end suction	Waukesha	FDA		3A	✓	Ex		200	150	600	16	200	17
Aquafit	Horizontal water pumps	Aturia							50	100	500	10	130	18
Aqualine	In line water pumps	Aturia							50	100	500	10	130	18
NA - NE	End suction DIN 24255	Aturia				Ex			50	100	500	10	130	18
TK-VTK	Multistage	Aturia				Ex			50	640	800	64	130	19
PD - VPD	Split case double suction	Aturia							50	170	3,500	20	130	19
Type A	End suction vortex	Wemco				Ex			80	35	225	10	80	20
Type F	End suction vortex	Wemco				Ex			80	45	320	10	80	20
Type MC	End suction vortex	Wemco				Ex			80	45	2,000	10	80	20
Type WP	In line vortex	Wemco				Ex			80	20	150	10	80	20
Type SP	In line vortex	Wemco				Ex			50	20	150	10	80	21
STM	Turbine	Aturia	FDA		✓	Ex			150	110	12	300	300	22
SDM	End suction	Aturia	FDA		✓	Ex			100	24	30	25	200	22
Metering Pumps														
MB-MC-XL-X9		OBL	FDA			Ex			1000	1,250	3.5	130	100	23
Pulsa - Pulsar		Pulsafeeder	FDA			Ex			1000	3,800	13	380	350	23
Process Equipment														
Shear Pumps		Waukesha	FDA						100,000	100	6.8	10	149	23
Colloid Mills		Waukesha	FDA		3A	✓			100,000	100	7.5	10	93	23
Scraped surface heaters		Waukesha	FDA		3A				1 million	110		11	185	24
Valves		Waukesha	FDA	EHEDG	3A	✓								24
Fittings		Waukesha	FDA	EHEDG	3A	✓								25
Systems		AxFlow	FDA	EHEDG	3A	✓	Ex							26

Please note that all technical information is approximate, consult AxFlow GB before specifying any product.

FDA SANIFLO

The Saniflo Series pump line is specifically designed for sanitary process requirements. Saniflo pumps incorporate a straight flow-through design, large solids passage and an internal, adjustable “Efficiency Management System” to maximise the pumps air efficiency.

- St Steel
- Buna
- EPDM
- Viton
- Neoprene
- Santoprene
- Hytrell
- Polyu'thane
- PTFE



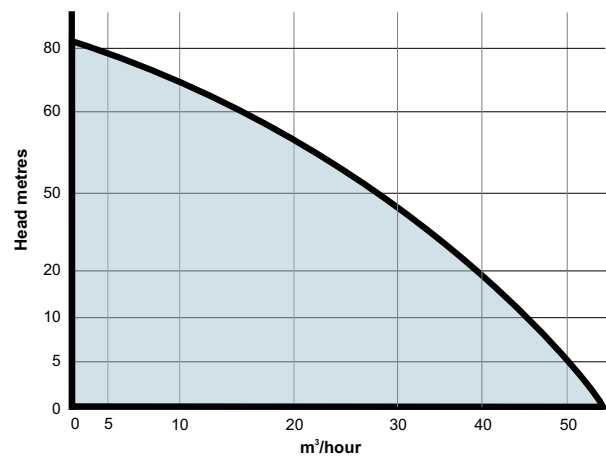
- Suitable for CIP.
- Available with Tri-Clamp fittings.
- Shear sensitive pumping action.
- Dry priming and dry running.
- Can be dead headed without damage.
- Will deliver variable flow and pressure.
- Sizes 1/2” to 3”.



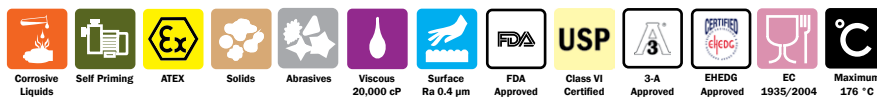
HS SANIFLO

The HS Saniflo Series pump range is an upgraded version of the Saniflo line. HS Saniflo pumps also incorporate a straight flow-through design, large solids passage and an internal and adjustable “Efficiency Management System”; but also a surface finish to 0.4 µ and higher levels of hygienic certification.

- St Steel
- Buna
- EPDM
- Viton
- Neoprene
- Santoprene
- Hytrell
- Polyu'thane
- PTFE



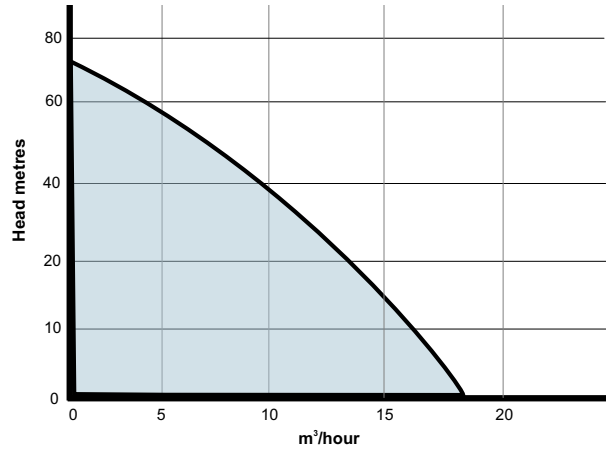
- Suitable for CIP.
- Available with Tri-Clamp fittings.
- Delicate shear sensitive pumping action.
- Dry priming and dry running.
- Can be dead headed without damage.
- Will deliver variable flow and pressure.
- Sizes 1” to 3”.
- Ball, mushroom, flap valves available.



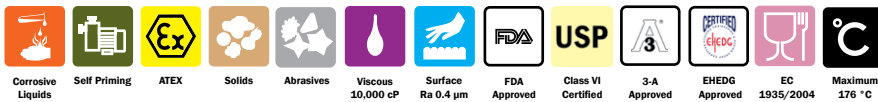
BIOCOR

Biocor pumps offer the very highest standard in sterile design and have no horizontal surfaces. Their ball valves are raised magnetically and the pumps can be drained without having to be dismantled. They offer surface finishes to 0.4 μ , high degrees of hygienic certification and a maintenance-free air control system without dead spots.

St Steel
Polyethene



- Highly sterile design with option for liquid barrier.
- Suitable for CIP and SIP.
- Available with Tri-Clamp fittings.
- Delicate shear sensitive pumping action.
- Dry priming and dry running.
- Can be dead headed without damage.
- Will deliver variable flow and pressure.
- Sizes DN 20, 32 and 40.



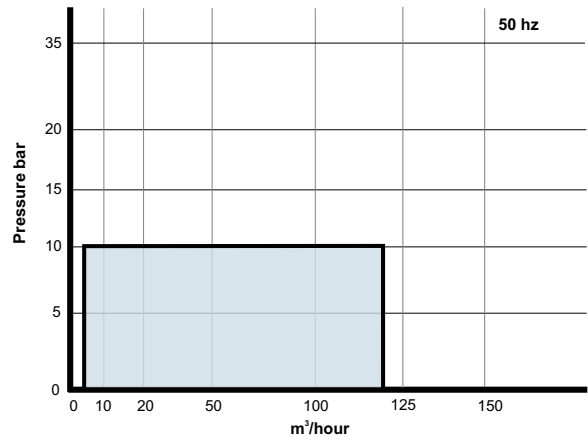


Rotary Lobe and Piston

MDL

The Medium Duty Lobe (MDL) pump has been developed to handle applications where a simple tri-lobe design can provide the solution. They can pump liquids up to 50,000 cP and are constructed with easy cleaning in mind. There is no possibility of lubrication oil crossing into the product zone.

- St Steel
- Carbon
- SiC
- EPDM
- Viton



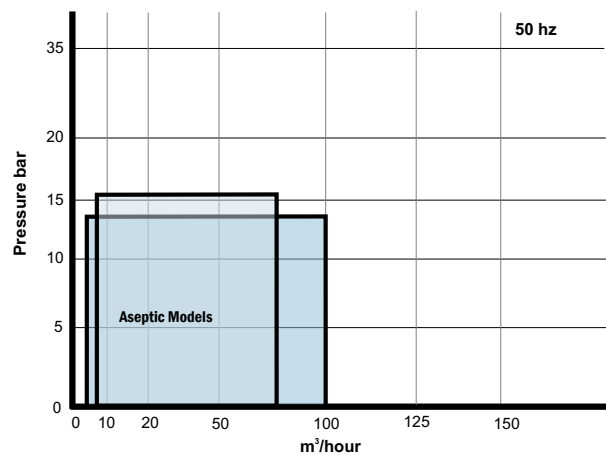
- Suitable for CIP.
- Bi-directional flow.
- Shear sensitive pumping action.
- Free draining pump housing.
- Dry running with flushed seal.
- Can pump large solids.
- Single, double and flushed seals.
- Sizes 1" to 6".



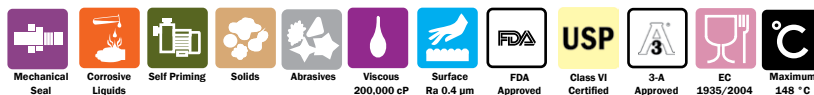
Universal I

Built around Waukesha arc shaped rotor wings resulting in a long sealing path, the Universal 1 Series offers very low pump slippage, high discharge pressures and the ability to pump liquids with both high and low viscosity. They are also extremely easy to maintain and are known for their long service life.

- St Steel
- EPDM
- Viton
- Silicone
- PTFE
- FEP
- Buna



- Suitable for COP and aseptic applications.
- Bi-directional flow.
- Very sensitive pumping action.
- Free draining pump housing.
- Dry running with flushed seal.
- Can pump large solids.
- Will deliver variable flow.
- Sizes 1" to 6".



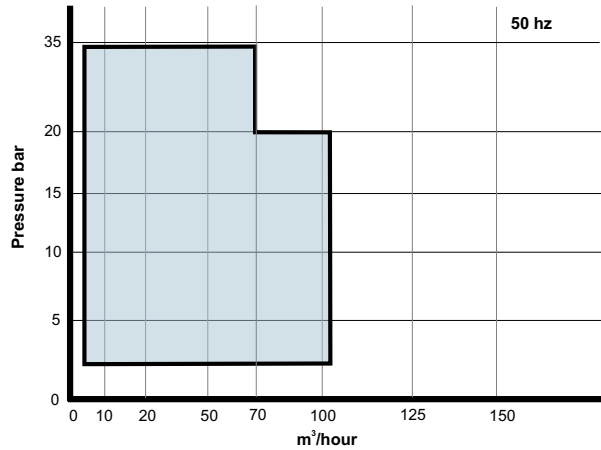


Rotary Piston

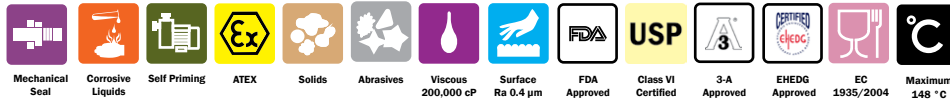
Universal II

Built around Waukesha arc shaped rotor wings resulting in a long sealing path, the Universal 2 Series offers the same low pump slippage, easy maintenance, low service life and the ability to pump liquids with both high and low viscosity as the Universal 1 but at higher flows and pressures.

- St Steel
- EPDM
- Viton
- Silicone
- PTFE
- FEP
- Buna



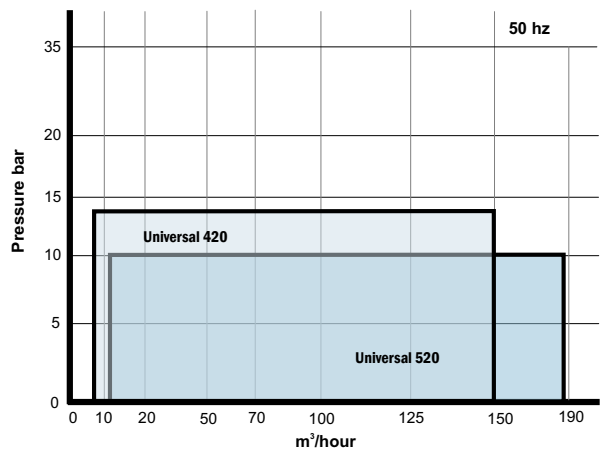
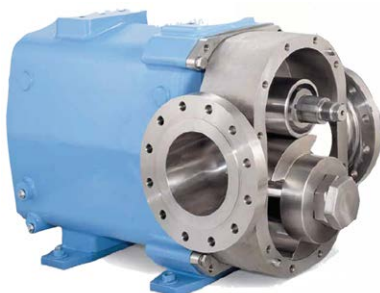
- Suitable for CIP and aseptic applications.
- Bi-directional flow.
- Very sensitive pumping action.
- Free draining pump housing.
- Dry running with flushed seal.
- Can pump large solids.
- Will deliver variable flow.
- Sizes 1" to 6"



Universal 420/520

The Models 420 & 520 are not just scaled up Waukesha PDs. They incorporate fresh design approaches that simplify installation, ease pump maintenance and extend pump life such as large diameter shafts, heavy duty bearing frame and double tapered roller bearings. Their rotors are constructed from Alloy 88 that eliminates stainless steel galling.

- Alloy 88
- St Steel
- EPDM
- Viton
- Silicone



- Rotor/shaft connection sealed from product.
- Sideway mounting capability for better draining.
- Non-galling Waukesha "88" alloy rotors.
- Aseptic model option available.
- Suitable for CIP.
- Labyrinth or magnetic seal bearing protection available.



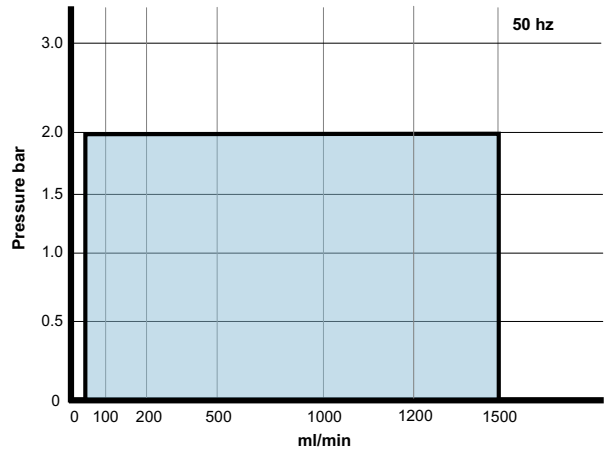


Peristaltic

APY

APY tube pumps are ideal for lower pressures and low flow applications providing accurate dosing of small quantities of up to 90 l/h and up to 2 bar pressure. The three roller design cuts vibration and tube replacement is quick and easy.

- Silicone
- Norprene
- Tygon
- Solva



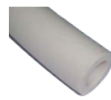
- Suction lift to 6 metres.
- Electronic equipment for batch applications.
- Plastic baseplate with leakage container.
- Reversible rotation.
- High dosing accuracy.
- Corrosion resistant.
- Sanitary tubes to FDA.



Tubes and Hoses



SILICONE widely used for food and laboratory applications chemically resistant with high temperature capabilities.



NORPRENE is an excellent all round tubing with very good chemical resistance, and low absorption rates.



SOLVA food grade PVC tubing compatible with oils, fatty products, some hydrocarbons and good for viscous products.



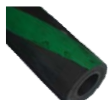
NORPRENE A60G offers an extremely long life time, good chemical compatibility and 120°C maximum temperature.



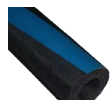
NR abrasion resistant and mechanical strength. Generally resistant to diluted acids, alcohols and alkaline products.



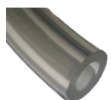
NORPRENE A60F is the food grade version of A60G resistant to CIP.



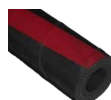
HYPALON has excellent resistance, to oxidizing products such as nitric, chornic, and hydrochloric acid as well as oxygen generating liquids such as hydrogen peroxide.



EPDM has good chemical resistance, specially used for concentrated acids, ketones and alcohols.



TYGON is plasticizer free with low absorption/adsorption properties, this minimizes the risk of fluid alteration making it particularly suitable for pharmaceutical and medical applications.



NBR shows excellence compression and abrasion resistance although it's temperature and chemical resistance capabilities are limited.



NBR-A is the FDA approved NBR material.

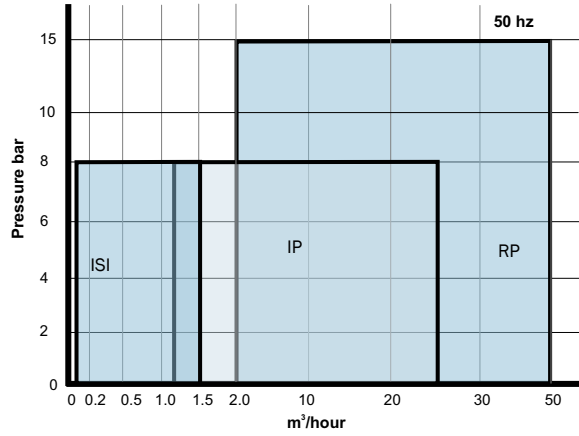


Peristaltic

ISI - IP - RP

A suite of industrial hose pumps that utilise shoes to compress the hose rather than rollers giving a more even and longer sealing area. They are fitted with inverter driven motors and have sturdy reinforced hoses.

- EPDM
- Silicone
- Norprene
- NR
- NBR
- HYPALON



- Suction lift to 9 metres.
- Reversible rotation.
- Hose leakage detector available.
- Can be accompanied with pulsation dampeners.
- Electronic equipment for batch.
- FDA materials available.
- Available with Tri-clamp, DIN 11851, SMS, NPT, PP, PVDF connections.



Shoes or Rollers



Rollers

Mounted on bearings rollers compress the surface of the hose during rotation. This design generates less friction and can support pressures up to 8 bar.



Shoes

Fixed shoes are an option for RP models which move across the surface of the hose during compression. Shoes spread the pressure over a greater area and make a firmer seal than rollers. Typically they are preferred for higher operating pressures (up to 15 bar) and more viscous liquids.

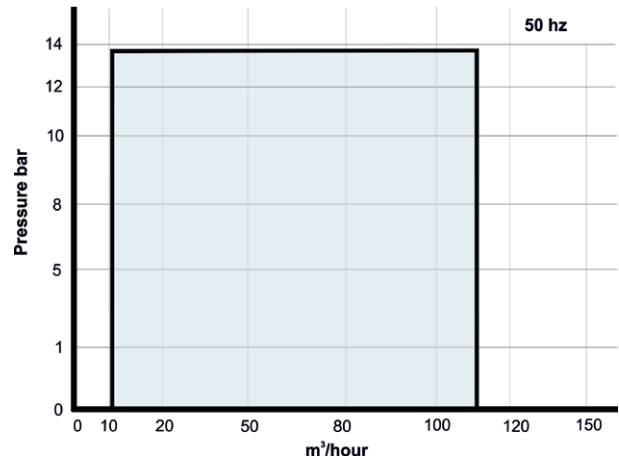
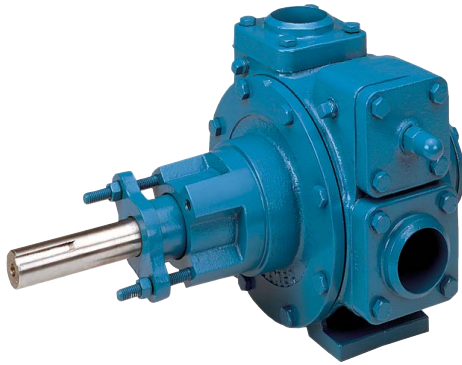


Vane

NP - SNP Series

Blackmer NP pumps are specifically designed to offer maximum versatility for handling a wide variety of clean non-corrosive liquids. The NP pump is ideal for applications that have varying fluid viscosity's and temperatures. NP pumps can be fitted with double mechanical seals. SNP denotes stainless steel.

- Cast Iron
- St Steel
- Duravane
- EC Laminate
- Bronze
- Viton
- PTFE



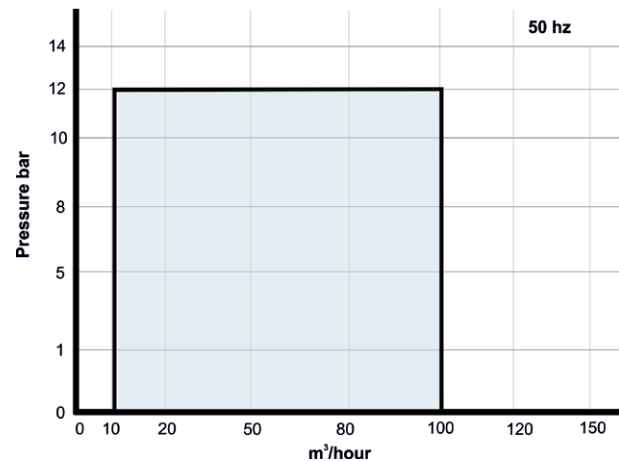
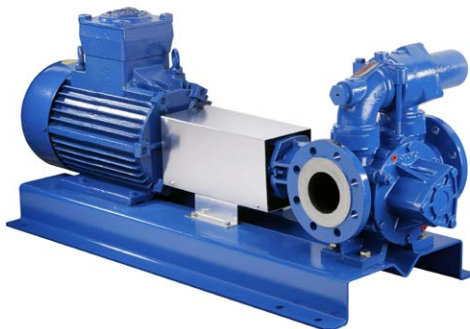
- Jacketed pump head available
- Excellent self-priming and dry run capabilities.
- Symmetrical bearing support assures even loading and wear for long life.
- Adjustable relief valve protects pump against excessive pressures.
- Vanes can be replaced without removing the pump from the piping system.



P Series

The Mouves P series vane pump P Series vane pumps cover a large range of applications, from fluid to very viscous products, whether they are non-lubricating, abrasive or corrosive they have proofed particularly successful use with chocolate products.

- St Steel
- Cast Iron
- Viton
- Nitrile



- CIP and SIP compatible.
- Performance remains constant over time.
- Dry-run capability.
- Can be supplied with built-in heating or cooling jackets.



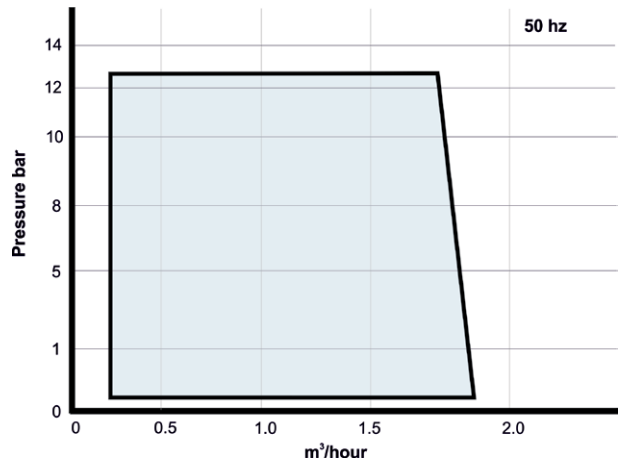


Vane

SVM

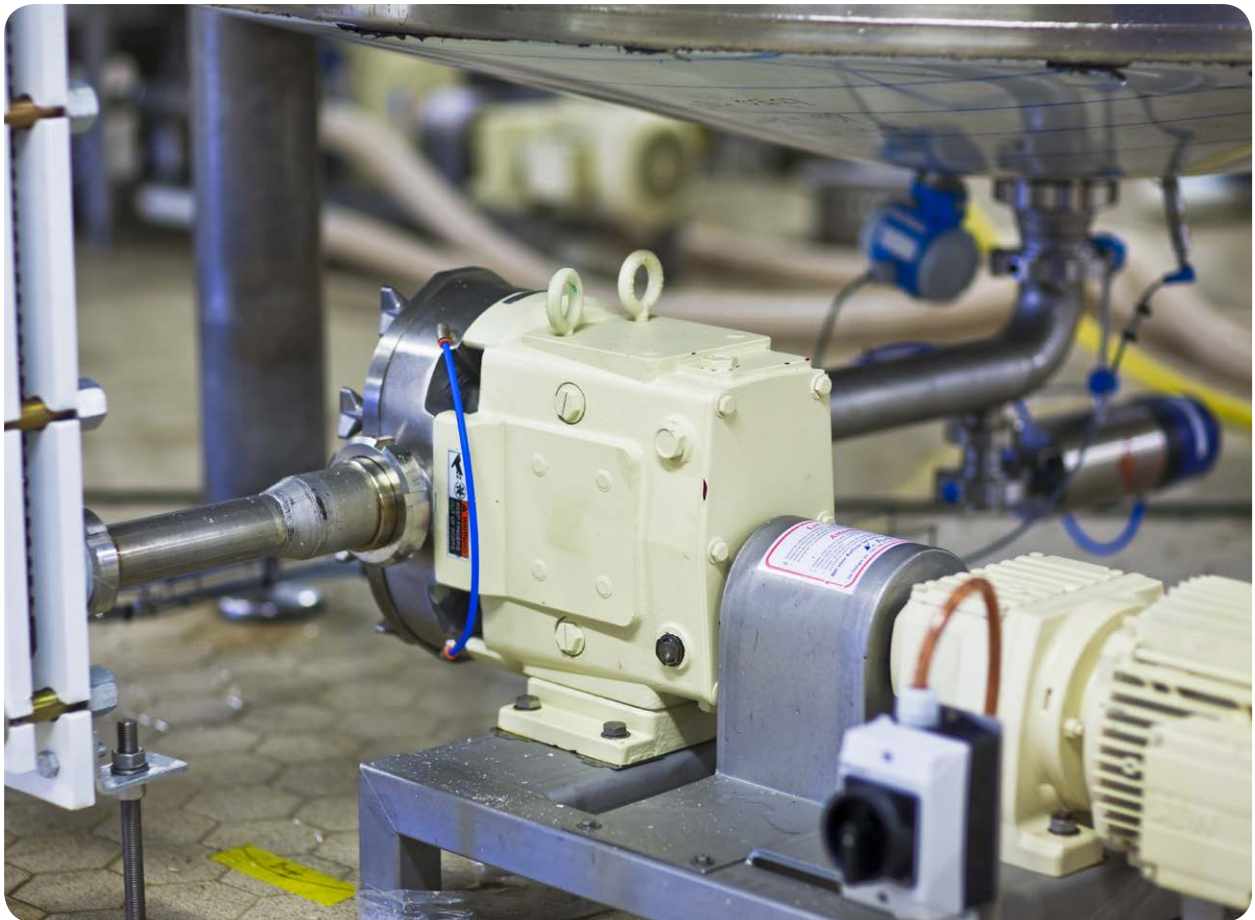
Robust high specification mag drive rotary vane pumps designed with a flow path which produces no pulsation. SVM pumps can be configured to a range of different applications and will pump fluids up to 300 °C.

- St Steel
- Carbon
- SiC
- EPDM
- Viton



- High heads - low flows.
- Viscous or thin liquids.
- Available with metallized graphite.
- Dry running capability.
- Threaded, PN, Tri-Clamp or ANSI flanges.
- SS plus options of Duplex and Hastelloy.

Magnetic Drive	Corrosive Liquids	Self Priming	ATEX	Viscous 3,000 cP	Maximum 300 °C



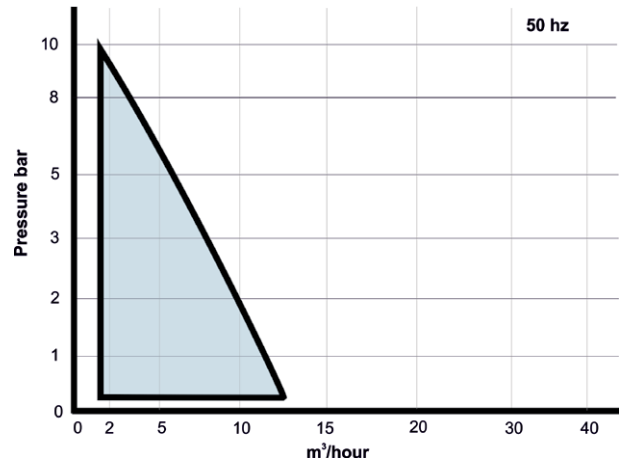


Eccentric Disc

S Series

S-Series pumps eliminate all leakage problems thanks to their direct drive seal-free design, no mechanical seals, packing or magnets. The transmission mechanism is protected by a high-resistance elastomer sleeve.

St Steel
Viton
FEP



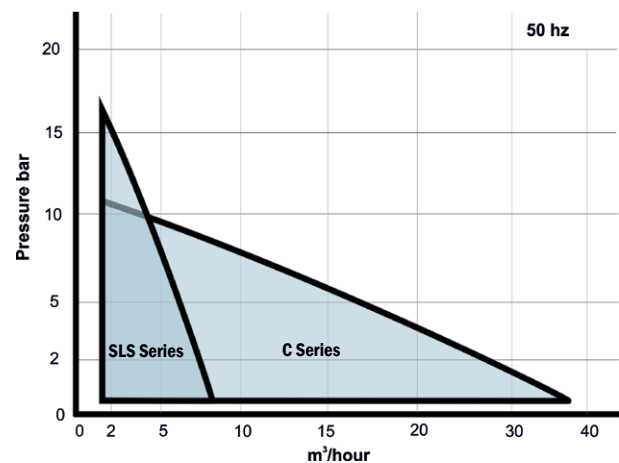
- Very accurate volume metering enabling precise dosing and mixing.
- CIP and SIP compatible.
- For viscous or fluid products.
- High-speed priming and self-priming.
- Pipe draining capability.
- Dry-run capability.
- Capability to clear the pipe.



C & SLS Series

Shear sensitive materials are safe when pumped with the C-Series. The unique eccentric disc concept provides gentle handling and high-volume efficiency. The C-Series is designed to be flushed and cleaned in place without disassembly. The new SLS Series meets the requirements of EC 1935/2004.

St Steel
Ductile iron
Viton
FEP



- Self priming.
- CIP Capability.
- Consistent performance over time due to automatic disc/cylinder adjustment.
- Can be flushed and CIPed without disassembly.
- Pumped product constantly renewed.
- Output not affected by viscosity variation
- Low linear speed.



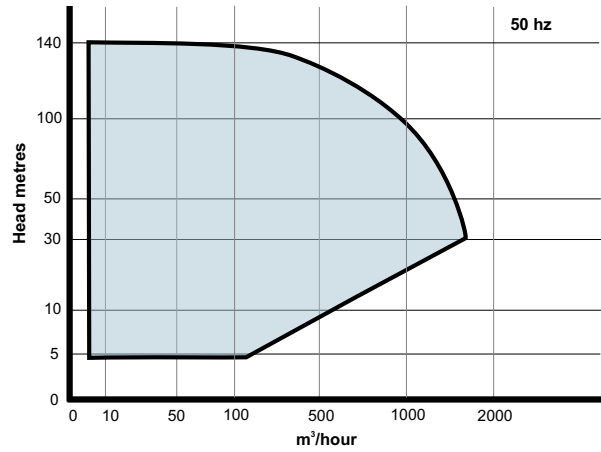
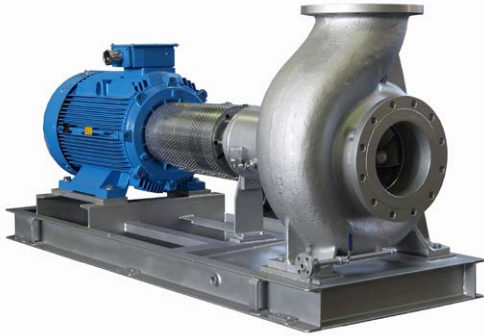


Centrifugal

ND

High quality ISO 2858 - ISO 5199 process pumps refined over many years service life to offer an efficient and balanced pump design. Most components are stocked resulting in short lead times.

St Steel
Dup st st



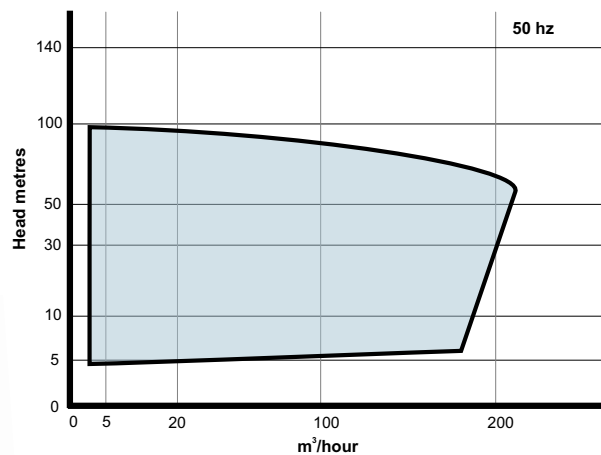
- Dynamically balanced impellers.
- Oil lubricated ball bearings.
- Back pull out design.
- Labyrinth seals on bearing supports to negate external contamination.
- Single, double and flushed seals.
- Optional Refrigerated seal chamber.
- SS with DX or Hastelloy options.



NDM

High quality magnetically driven ISO 2858 pumps. NDM pumps have hydraulically and hydro-statically balance pump chambers and Hastelloy rear housings, Samarium Cobalt magnets and Silicon Carbide bears as standard. They are available as either a long or close coupled construction.

St Steel
Hastelloy
Dup St St
SiC



- No mechanical seals to leak or service.
- Oil lubricated ball bearings.
- Incoloy or Hastelloy constructions available.
- Back pull out design with screw-on impeller.
- Available with self cleaning filters.



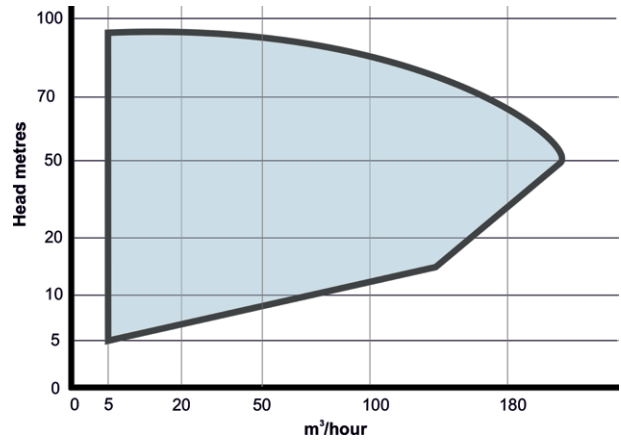


Centrifugal

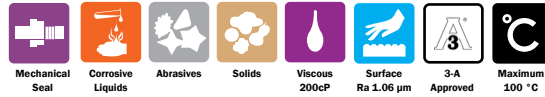
C Series

The C Series is our standard range of hygienic transfer and CIP pumps for liquids up to 200 cP. They offer a versatile performance at competitive prices and are suitable for most hygienic centrifugal pump applications. They can be installed without fear of seal failure from elevated inlet pressures, even with viscous products.

- St Steel
- Buna
- Viton
- EPDM



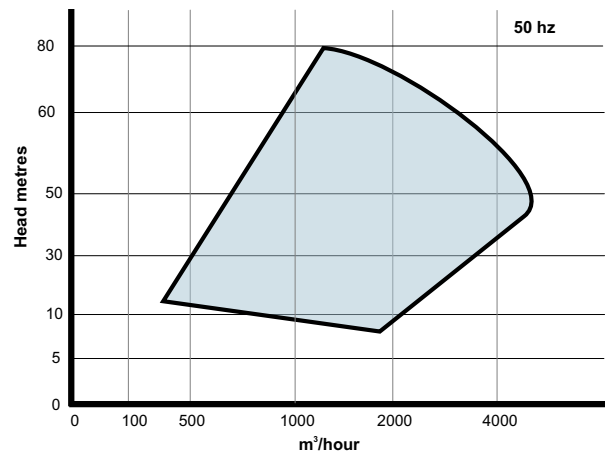
- Single, double and flushed seals.
- Tri-Clamp connections.
- Quick release pump body to ease cleaning.
- SS motor shroud available.
- Hydraulic balanced impellers.
- Easy-cleaning, open type impeller delivers smooth pumping performance and the passage of solids.
- Enlarged inlets available for larger suction lines.
- Standard CIP capability.



ULN-UHN

Large transfer pumps that can be fitted with a special bladed impeller and axial inducer for viscous, fibrous and non Newtonian liquids.

- St Steel
- Dup st st



- Internal parts can be polished.
- Will transfer liquids with fibrous elements.
- Single, double and flushed seals.



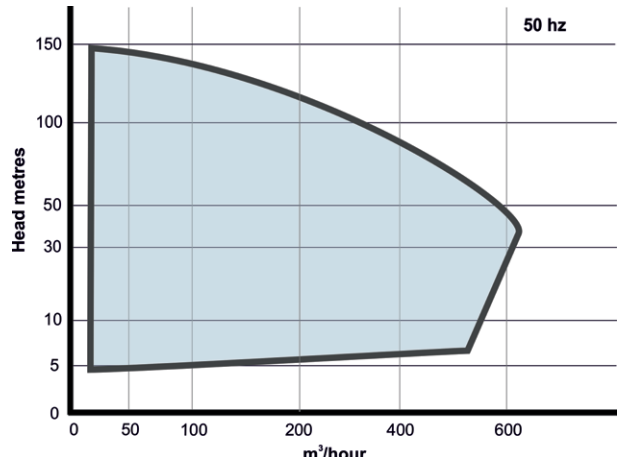


Centrifugal

UC Series

The UC Series is a modular, high specification hygienic product range with a variety of alternative construction types based around the patented SPX spiral shaped rear flange which results in reduce turbulence leading to gentle product handling and increased efficiency.

- St Steel
- EPDM
- Viton
- PTFE



- Direct visual inspection possible.
- Fully CIP compatible.
- Tri-Clamp, I-Line, Bevel Seat connections.
- Flow directed to seal to assure sanitation.
- Seal spring external to liquid product.
- Constructed for easy maintenance.
- Designed to offer minimal turbulence and vibration.
- Interchangeable single, balanced and flushed seals.



UCi with integral inducer

- 50 to 70% reduced NPSH requirement.
- Operates with fluids close to boiling.
- Extends the operational viscosity range of the pump to 500 cP.
- Can handle gas laden liquids.



UCh high pressure construction

- For system pressures up to 60 bar.
- Higher external torsional loads.



UC Multi-stage

- Can deliver differential heads up to 150m.
- CIP friendly.
- Long coupled for easy maintenance.



UCs self priming construction using a unique eccentric air screw design.

- Reduced noise levels.
- 3A and EHEDG compliant.
- Can withstand particulates.



UCa aseptic construction

- Seals can be sterile flushed.
- Hygienic fittings as standard.
- Can be used with barrier media.



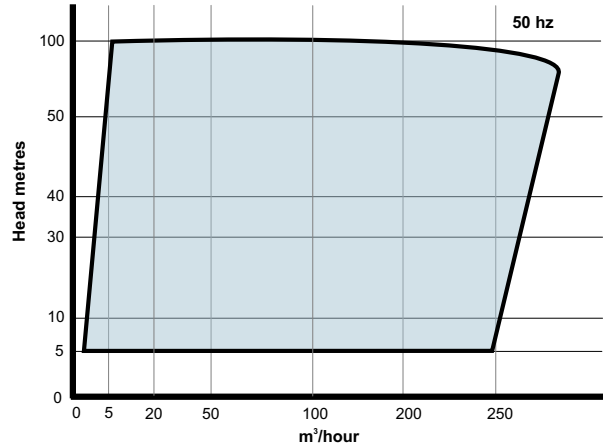
Centrifugal

AQUAFIT

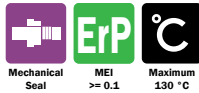
The AquaRange of mono block pumps is made up of :

- **AquaFit** close coupled horizontal single stage end-suction pumps with performances and key dimensions in accordance with DIN 24255.
- **AquaLine** in-line vertical close coupled pumps available as either a single or double construction.

Cast Iron
Bronze
St Steel



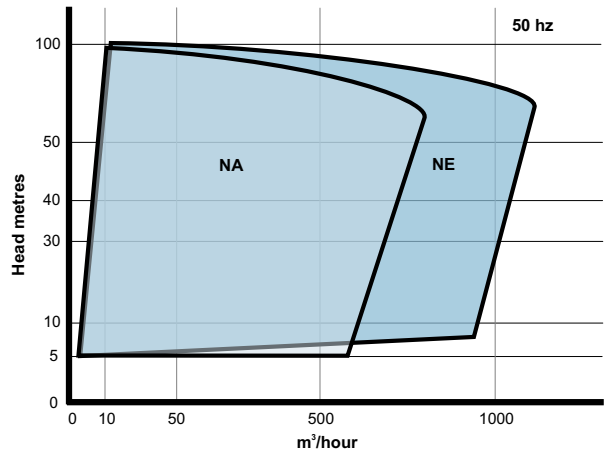
- All pumps comply with the ErP Directive.
- Dynamically balance impellers.
- Low NPSH requirements.
- High quality castings.
- Compact construction.
- Designed and manufactured to ISO 9001.
- Short delivery times.
- A choice of connection types.



NA and NE

DIN24255-EN733-UNI 7467 long pumps. The NA range being the standard construction which is complimented by the more robust and ATEX certified NE range. Many of the NA range models are stocked.

Cast Iron
Bronze
St Steel



- Oversized shaft with oil lubricated ball bearings.
- Dynamically balanced impellers.
- Many sizes ex-stock.
- High efficiency & low NPSHr.
- CI with optional SS and Bronze impellers.
- Available with a range of seals.



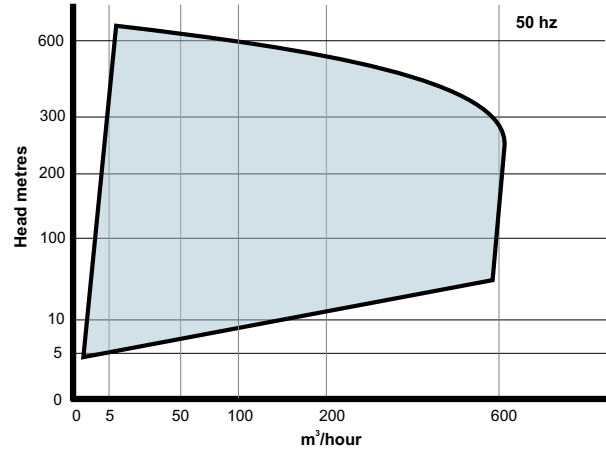
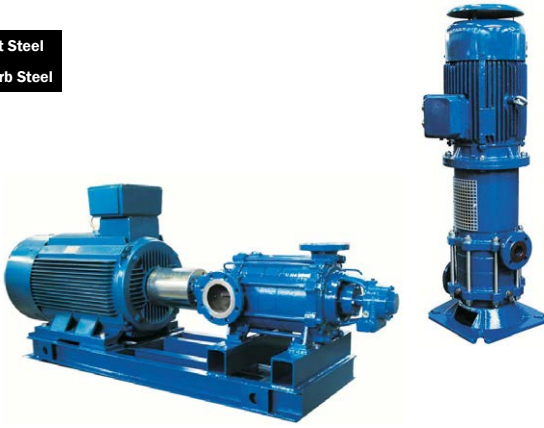


Centrifugal

TK-TKR

A comprehensive range of horizontal and vertical multistage boiler feed pumps designed to ISO 9908 and ISO 9906 deg 2. All models can conform to the latest ErP directive requirements.

St Steel
Carb Steel



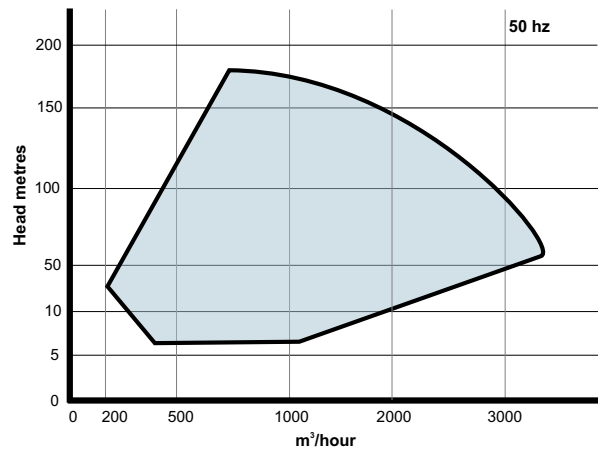
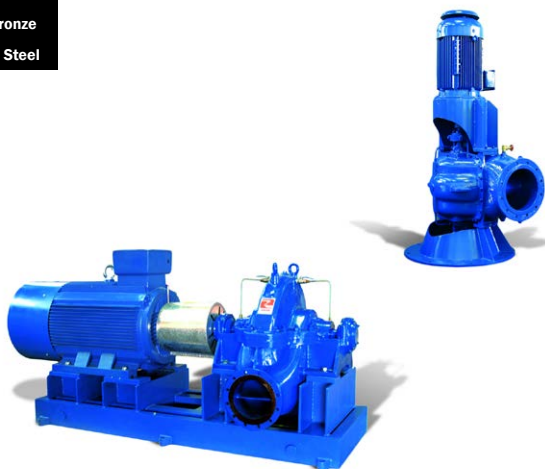
- Oversized shaft.
- Double, oil lubricated ball bearings.
- Dynamically balanced impellers.
- High efficiency & low NPSHr.
- CI with optional SS and Bronze impellers.
- Available with a range of seals.



PD

Robust split case, double suction pumps available in either horizontal or vertical configurations. The position of inlet and outlet nozzles (in the lower half case of PD horizontal pumps or in the rear half case of PDV vertical pumps) allows inspection and repair without removing the pump from its position.

Cast Iron
Bronze
St Steel



- Replaceable shaft sleeves.
- Pump body in CI optional steel or ductile iron.
- Impellers CI optional DI and SS.
- Grease or oil lubricated roller bearings.
- Gland packing or a range of mechanical seals.



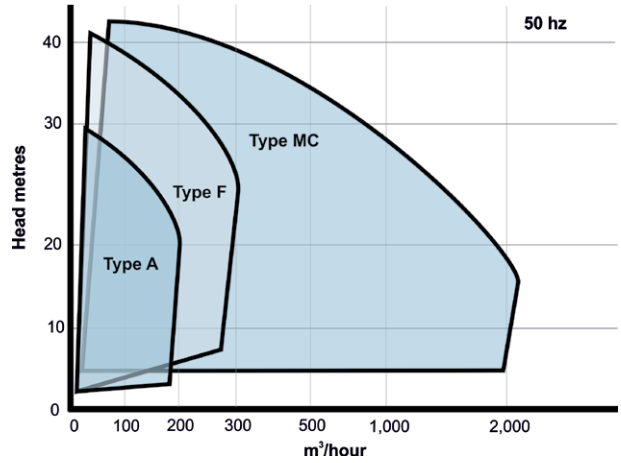


Centrifugal

Type A, F, MC

Industry's toughest grit-handling vortex pump range based around the Wemco recessed vortex impeller. Wemco pumps are designed allow free solids passage of up to 250mm particle size. They can handle animal parts and even feathers. To aid with abrasive applications they can be manufactured with Wemco's hi-chrome wear resistant metal.

Cast Iron
St Steel
Hi-Chrome



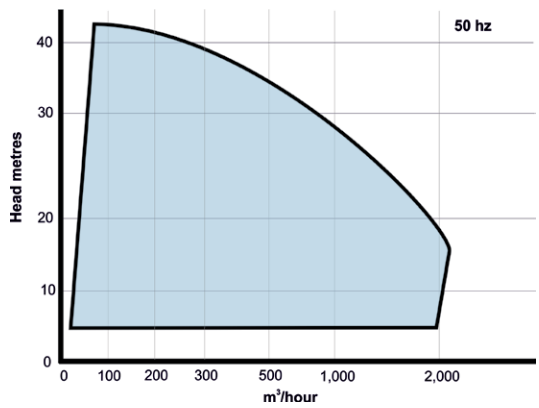
- Recessed vortex impeller.
- Generous wear allowances.
- Casing and volute thickness over 15 mm
- WP vertical cantilever range has no bottom bearing and will run dry.
- Gland packing or mechanical seals.
- Up to 250 mm free solids passage.



WP

Seal-less cantilever pumps with no bottom bearings based around the Wemco recessed vortex impeller. Wemco pumps are designed allow free solids passage of up to 250mm particle size. They can handle animal parts and even feathers. To aid with abrasive applications they can be manufactured from Wemco's hi-chrome wear resistant metal.

Cast Iron
St Steel
Hi-Chrome



- No bottom bearing.
- Can run dry.
- Recessed vortex impeller.
- Generous wear allowances.
- Casing and volute thickness over 15 mm
- Suction extension tube up to 3 meters
- Up to 250 mm free solids passage.



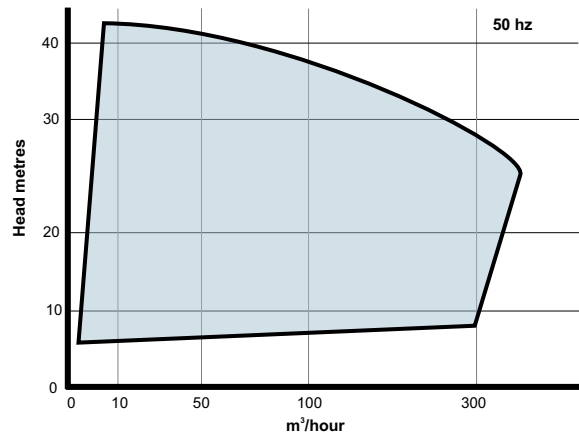


Centrifugal

Type SP

Self priming solids handling and abrasion resistant pumps. They feature a self cleaning buzz saw wear plate. They can handle animal parts and even feathers. To aid with abrasive applications they can be manufactured from Wemco's hi-chrome wear resistant metal. They come with a 66 month warranty.

Ductile Iron
St Steel
Hi-Chrome
Dup st st



- Automatic air release valve,
- 120V/240V casing heater.
- High pump temperature shut-down kit.
- Moisture probe gauge.
- 66 month warranty.

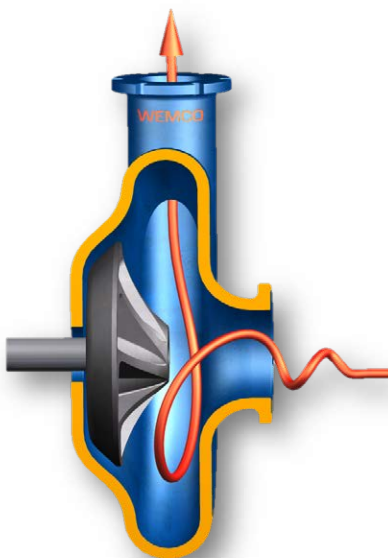


The Wemco Vortex Principle

The impeller develops a swirling vortex, which extends into the suction pipe, drawing solid particles into the liquid stream.

Particles are drawn into the pump, most of them will be discharged within one revolution due to the centrifugal force induced by the vortex action.

A range of different vortex impeller types can be fitted to ensure the most effective and efficient pump is installed.



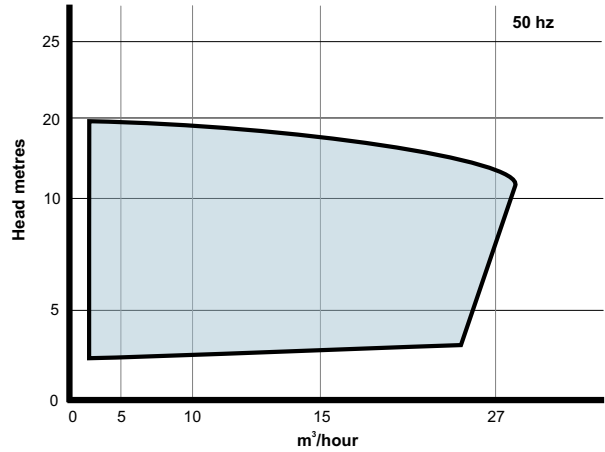


Centrifugal

SDM

Compact and robust centrifugal transfer pumps made from 316 stainless steel designed to handle a wide range of acids, solvents, alkalis and refrigerants. Fitted with Samarium Cobalt magnets SDM pumps can be configured to handle liquids up to 200°C.

- St Steel
- PTFE
- Carbon
- EPDM
- Viton
- FEP



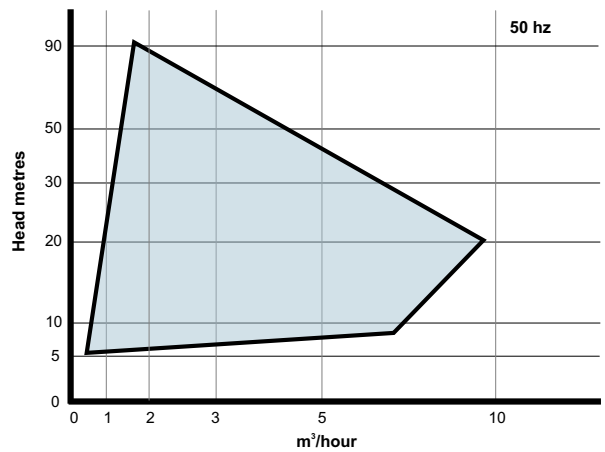
- No mechanical seals to leak or service.
- BSP, NPT, PN or ANSI connections.
- Can be mounted vertically.
- Vacuum welded internal magnets available.
- Can be constructed to suit off shore applications.



STM

High specification regenerative turbine pumps for high heads/low flow applications. Because STM pumps are machined from solid metal they offer an extremely wide range of design options and construction materials.

- St Steel
- Hastelloy
- Dup St St
- Titanium
- PTFE
- Carbon
- EPDM
- Viton
- FEP



- No mechanical seals to leak or service.
- High system pressure capability up to 200 bar.
- Will pump up to 20% entrained gasses.
- Can be vertically mounted.
- Polished internal surfaces available.
- Threaded, Tri-Clamp, PN or ANSI flanges.



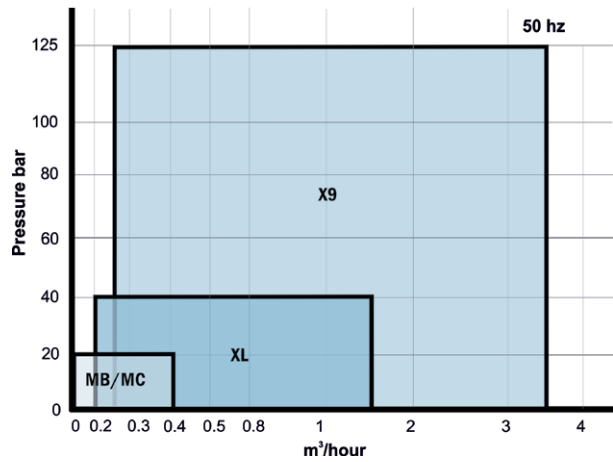


Metering

OBL

OBL manufacture both plunger and diaphragm type metering pumps. The range offers solutions for small dosing up to flows of 3.5 m³/hr. Using both plastic or metallic wetted parts OBL pumps can be used with a wide range of liquids.

- St Steel
- Hastelloy
- PP
- PVC
- PVDF
- PTFE



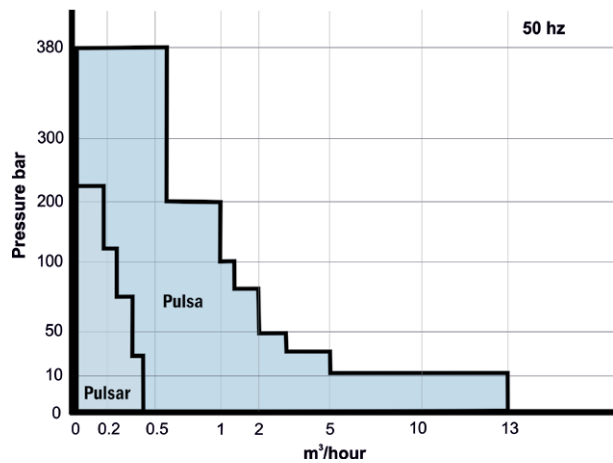
- OBL's unique (patented) mechanical diaphragm design ensures linearity between flow rate and percentage of stroke.
- A wide range of control mechanisms are available.
- Multiple pump arrangement is possible for most models.



Pulsafeeder

Two ranges of hydraulically actuated diaphragm metering pumps with balanced single piece diaphragms. Hydraulic diagnostics provide immediate visual information about the pumps and their gearboxes are manufactured with high-quality materials, guaranteed for five years.

- St Steel
- Hastelloy
- Dup St St
- Titanium
- Monel
- PTFE
- PVC
- PVDF



- Diagnostics give hydraulic operation, system over-pressure, diaphragm integrity and proper hydraulic oil fill level data.
- Three component check valves.
- Manual stroke length controls.
- Robust four bolt tie bar design provides.
- External hydraulic bypass.



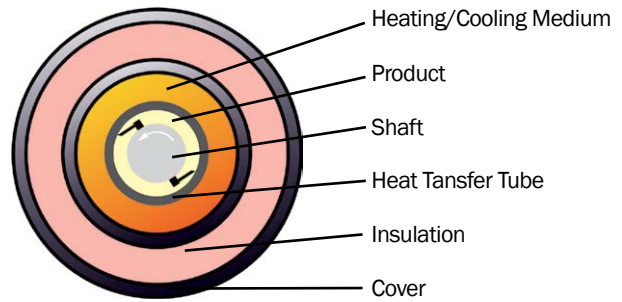


Heat Exchangers

Scraped Surface Heaters

Waukesha Scraped Surface Heat exchangers continue to replace many slow, inefficient batching operations with more uniform, controllable, and repeatable processing. Their superior heat transfer performance and ability to handle a wide range of viscosities makes them the clear choice over tubular or massive plate heat exchangers in viscous applications.

St Steel



They work on a simple concept; by heating or cooling continuously moving product by providing a large heat transfer surface for a small amount of product in a confined space.

- Energy and cost efficient.
- Consistent.
- Good with viscous products and those prone to crystallise.
- Easy to maintain.
- Suitable for aseptic applications.
- The constant agitation results in more consistent heating or cooling and eliminates stagnant areas.
- Gear motor drive - no couplings, belts or sheaves.
- Can be mounted vertically or horizontally.



Valves

Valves

Waukesha offer an extremely comprehensive range of manual and automated valves and mixing valves, all manufactured from 316 stainless steel.

St Steel

Buna
EPDM
Viton
Silicone
PTFE



The range includes:

- Spring Check.
- Horizontal Check.
- Plug.
- Relief.
- Air Vent.
- Sample.
- Double Seat Mixing.
- Divert.
- Flow diversion.
- Over Pressure.
- Butterfly.
- Ball.
- Fractional.
- Shut off.





Dispersion Pumps

Shear Pump

Waukesha Shear Pumps combine product transfer with otherwise expensive processing operations. A complete predictable action produces mechanical, hydraulic, ultrasonic and controlled cavitation phenomena for dependable, uniform in-line or batch processing with no aeration. The mixing action is equivalent up to a 500 psi homogenizer.

- Texturizes products such as soft cheeses and pastes
- Emulsifies products with both oil and water based ingredients.
- Provides continuous, on-line blending
- Reconstitutes powdered products.
- Provides uniform dispersion.
- Polishes products to provide a smoother texture.

St Steel



Colloid Mill

The Waukesha Cherry-Burrell Colloid Mills dispense product in-line through larger openings. A serrated conical stator and serrated rotating cone make up the emulsifying head. You get up to 50% more flow rate with less heat than other mills. With only 7 basic parts they quick and easy to clean. The mixing action is equivalent up to a 1,200 psi homogenizer.

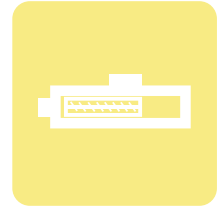
- Can be adjusted while operating.
- Calibrated ring sets spacing; no special tools.
- Suitable for CIP.
- Clearance setting does not effect product movement.

St Steel

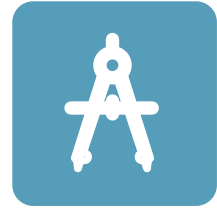
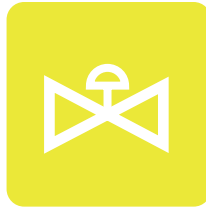




Food & Beverage Systems



Pumps, Heat Exchangers and Dispersion Equipment



Pipes & Fittings, Valves, Instrumentation and Design



Our intimate knowledge of the key individual components such as pumps, heat exchangers and dispersion equipment that comprise food and beverage process equipment - makes us uniquely placed to offer a wide range of food processing systems.

- De-boning.
- Sauce production.
- Viscera.
- Pasteurising.
- Sauce production.
- Blending.
- Pasteurising.
- Chocolate processing.

Heating - Cooling - Mixing - Blending - Pumping



Installation

We can install and commission your pumps to ensure they work properly from the word “go” and identify any issues with your system that may adversely affect the pump.



Monitoring

We can monitor your pumps to check they’re working OK. By performing regular checks we can foresee problems and carry out planned maintenance work, therefore preventing pump failures and process stoppages.



Repair

We can undertake numerous types of work on-site or at one of our Service Centres. This work can range from simple maintenance, to completely rebuilding your pump by recreating key components.



PD Pump Repair

AxFlow are the acknowledged European leaders in the supply of positive displacement pumps.

This means that we truly understand positive displacement pumps and the special challenges that their repair can pose. It also means that we hold large stocks of components that reduce our repair times.



Hygienic Pump Repair

As a result of our strength in positive displacement pumps and knowledge of the Food & Beverage Industry, we have become market leaders in the supply of hygienic pumps to a range of different industries across the UK.

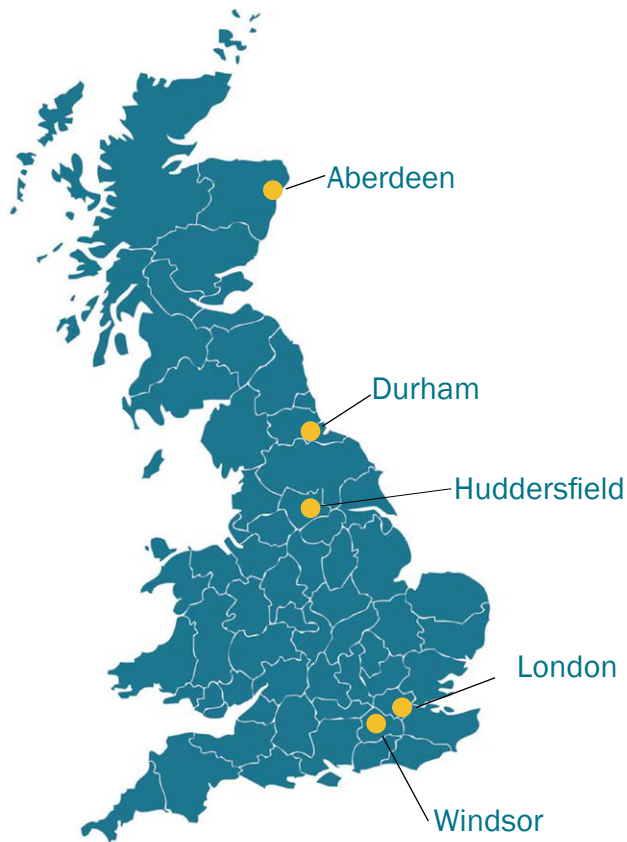
To support this we have created clean assembly areas within our repair facilities and developed specific hygienic pump repair procedures.



Large Pump Repair

We have the ability to handle up to 40 tonnes, and test motors up to 30 kW which make us able to work with the very largest of pumps.





AxFlow London

Orion Park, Northfield Avenue, Ealing, London W13 9SJ
Tel.: +44 (0)208 579 2111 E-mail: info@axflow.co.uk www.axflow.co.uk

AxFlow Scotland

Unit 3, Harlaw Centre, Howe Moss Crescent,
Kirkhill Industrial Estate, Dyce, Aberdeen, AB21 0GN
Tel.: +44 (0)1224 729 367

AxFlow Durham

Unit 31, Evans Business Centre, Aycliffe Business Park,
Newton Aycliffe, County Durham, DL5 6ZF
Tel.: +44 (0)1325 327 322

AxFlow Huddersfield

Unit 9a, Fieldhouse Business Park, Old Fieldhouse Lane,
Huddersfield, HD2 1FA
Tel.: +44 (0)1484 543 649

AxFlow Windsor

Unit 5, Millside Park, Crouch Lane, Winkfield, Windsor,
Berkshire, SL4 4PX
Tel.: +44 (0)1344 886 633